

The background of the entire page is a green puzzle. In the center, there is a photograph of several hands of different skin tones reaching towards a piece of light-colored clothing, possibly a t-shirt, which is being held together. The puzzle pieces are a mix of light and dark green shades.

FEEDING THE CHAIN OF SOLIDARITY



A WORD FROM THE PRESIDENT AND THE EXECUTIVE DIRECTOR

RICHARD BLAIN, *President*

It is with great pride that I accepted the role of president of Moisson Montréal's board of directors last June. As a member of the board since September 2008, I was ready to take on new challenges within the team. I wish to extend my thanks to Christian Lamarre, past chairman, who kept his seat on the board, for his extraordinary work, his generosity and his loyalty. His expertise will help us lead this ship to safe harbour.

We've come so very far in the past year. Solid leadership and an innovative vision have allowed us to redouble our efforts and make huge advances in streamlining our processes, while still focusing on finding sustainable development solutions. Moisson Montréal is, now more than ever, better equipped to pursue its expansion and updating projects.

All of the changes lead us back to the achievement of our main goals: to welcome more and more volunteers, to expand our supplier pool and to make sure our organization can continue pursuing its mission. In other words, to do more and do it better!

This would not be possible without the support of our amazing solidarity network: our loyal partners, contributors, community organizations, employees, volunteers, suppliers; all of these social actors who are committed to making a difference in their community and thanks to whom we can achieve great things. Together, everything is possible!

DANY MICHAUD, *Executive Director*

In 2011, more than 7,000 people across the Island of Montreal sought food aid for the first time. This is an alarming number for such a wealthy country. The face of hunger has changed: households with a working income now represent 13% of the food bank's clientele, the number of seniors in need has reached record proportions and the number of students seeking assistance has tripled.

To adequately meet this increasing demand, we had to fine-tune our operational efficiency. Today, I can say that our efforts have been fruitful. The implementation of the computerized inventory management system is going well and our operational update is already producing the positive results we expected. We are more efficient and effective and our leadership position in food collection is stronger for it.

However, there is still much more to do and we can't slow down now. We need to continue with big projects that will place us at the forefront of environmental responsibility.

All of Moisson Montréal's employees with the support of thousands of volunteers are working towards the same goal: to redistribute as much foodstuff as possible feeding as many people as possible. How? By eventually converting the donations received into the following ratio: for every dollar we get, Moisson Montréal will redistribute twenty dollars of goods. This means that everyone can make a difference on the dinner tables and in the lives of people in need. Thank you for your continuing support!

MISSION, VALUES AND KEY FACTS

Moisson Montréal is a leader in the collection and redistribution of foodstuff intended for emergency food aid. Since 1984, Moisson Montréal's goal has been:

- To ensure optimal food supply to community organizations serving people in need on the Island of Montreal;
- To take part in the development of sustainable solutions that foster food security.

Our Values:

- **Respect:** for the people we help, co-workers, volunteers and partners;
- **Integrity:** in each and every action taken by volunteers and staff members;
- **Fairness:** in making decisions for collaborators as a whole and for the sharing and distribution of foodstuff;
- **People helping people:** the strength of Moisson Montréal's people making the most of their role within their environment;
- **Commitment:** to fighting hunger on a daily basis and in the long term.

THE NEW FACE OF HUNGER IN MONTRÉAL IN 2011*

- Each month, 148,460 people seek food aid;
- 41,258 are children;
- 13% of households receiving aid have a working income;
- Families with children represent nearly 1/3 of people receiving food assistance;
- The number of seniors seeking aid has reached a record number.

*Source: Hunger Count 2011



Centraide
du Grand Montréal

Moisson Montréal wishes to thank Centraide, a loyal partner, for its essential and ongoing support.



**BANQUES
ALIMENTAIRES**
Québec

Along with 17 other associations, Moisson Montréal is a member of Banques Alimentaires Québec and is responsible for the province-wide distribution of foodstuff.

Moisson Montréal
6880, Côte-de-Liesse Road
Montreal, Quebec H4T 2A1
Tel.: 514 344-4494
info@moissonmontreal.org
www.moissonmontreal.org



SUPPLY AND OPERATIONS

Moisson Montréal's warehouse, the core of its operations with some 107,000 square feet of space in which more than eleven million kilos of foodstuff transit every year. We have a multidisciplinary team comprised of around 20 employees and many, many volunteers to ensure the collection, sorting, storage and the adequate distribution of our inventory.

KEY RESULTS GENERATED BY OPERATIONAL UPDATE

- 11,958,381 kg of foodstuff received – a 10% increase over one year;
- 10,410,926 kg of foodstuff distributed – a 14% increase over last year;
- \$55,954,072 worth of foodstuff distributed, the equivalent of \$10.4 million more than in 2011;
- The average percentage of rejected foodstuff is about 5%.

ESSENTIAL PARTNERS

Despite a harsh economic context, Moisson Montréal concluded profitable partnerships with new suppliers: Gattuso Inc., Arthur Roger et associés, Fromageries Bel.

PRESTIGE AND EMERITUS AGRIFOOD CONTRIBUTORS

- Agropur Coopérative, Natrel Division;
- Alternative Processing Systems inc. (APS);
- Banques alimentaires Québec;
- Bercy Foods;
- Boulangerie St-Méthode;
- Chenail Import Export;
- Danone Inc.;
- Food Banks Canada;
- Fruits et légumes Gaétan Bono inc.;
- Kraft Canada Inc.

2011 CHRISTMAS CAMPAIGN

This is the biggest campaign of the year. It represents:

- 40,000 kg of foodstuffs come from:
 - Corporate collections: 140 business;
 - Quebec media campaign "La grande guignolée des médias";
- 3,600 young turkeys and 3,380 turkeys purchased and distributed thanks to a \$70,000 donation from the *Fondation Marcelle et Jean Coutu*;
- 15,500 Christmas baskets distributed, each containing 25 different items;
- 35,000 meals served during the Holidays;
- 4,973 bags of foodstuff distributed between Christmas and New Year;
- 28,036 kg of fresh fruit and vegetables as well as bread for the *Regroupement des Magasins-Partage*;
- Foodstuff donation worth \$300,000 from Métro.

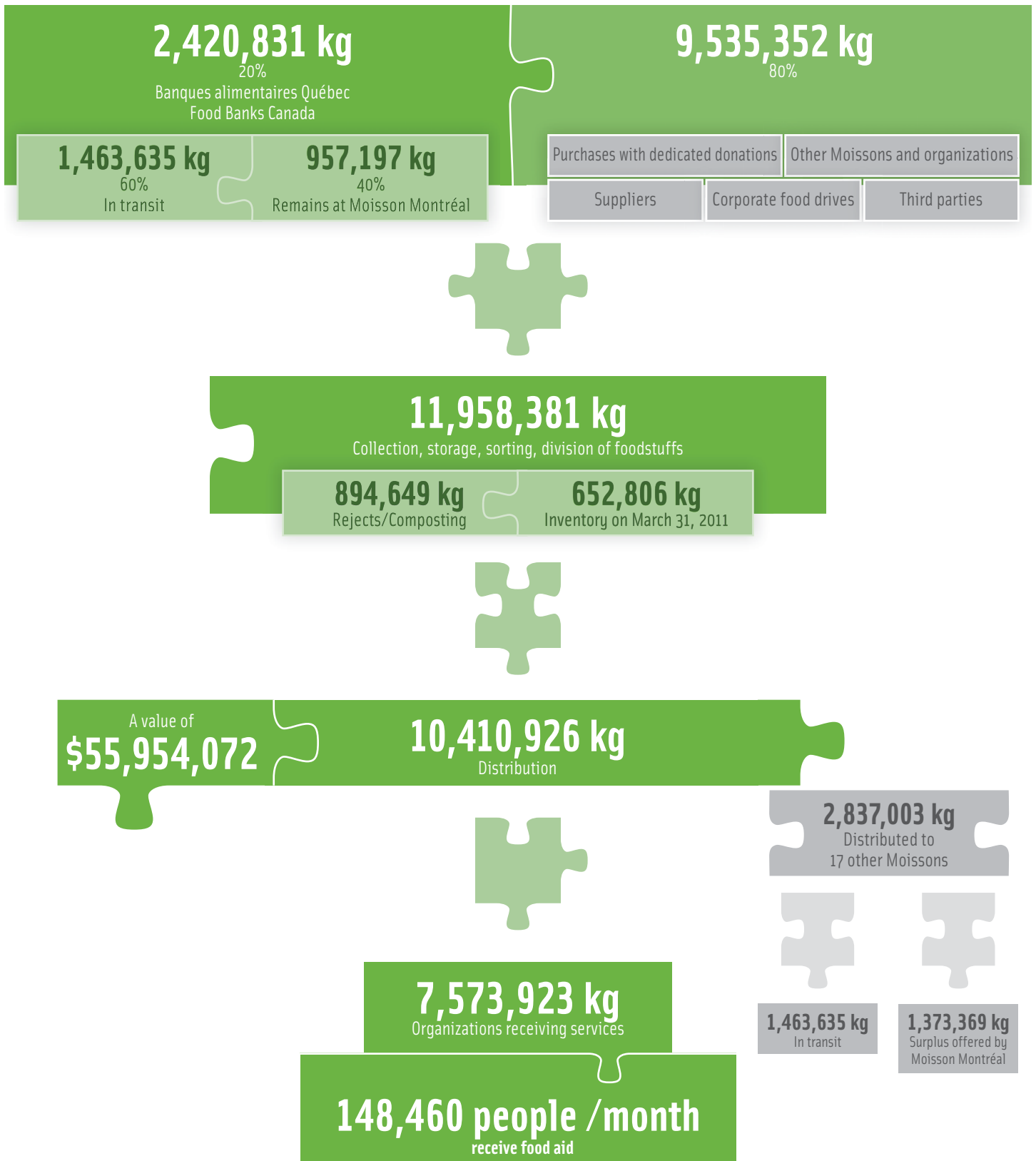


CECD AWARDED HONOURABLE MENTION

In March 2012, within the framework of the Montreal Real Estate Forum, the Urban Development Institute of Quebec (UDI Quebec) awarded an Honourable Mention Award of Excellence to the *Coalition énergie et construction durable* (CECD) for its Moisson Montréal renovation project. This project had a huge impact on the juries due to the exceptional nature of the cause and the building's innovative and sustainable design. Furthermore, with a majority of votes, almost five thousand, CECD also received the *Coup de cœur* award from the IDU network. Bravo and thank you to CECD and business partners!

FOODSTUFF ROUTE

Foodstuff provenance (donations and purchases)





COMMUNITY LIAISON

A team of 7 employees is assigned to 2 specific sectors: advisory and support to organizations receiving our services, management and development of the Good Food Box (GFB) program.

OVER 200 REGULAR AND SEASONAL ORGANIZATIONS SUPPLIED ACROSS THE ISLAND OF MONTREAL*

*65 other occasional organizations receive assistance

Moisson Montréal supplies various types of organizations with different roles, which in turn help people in need:

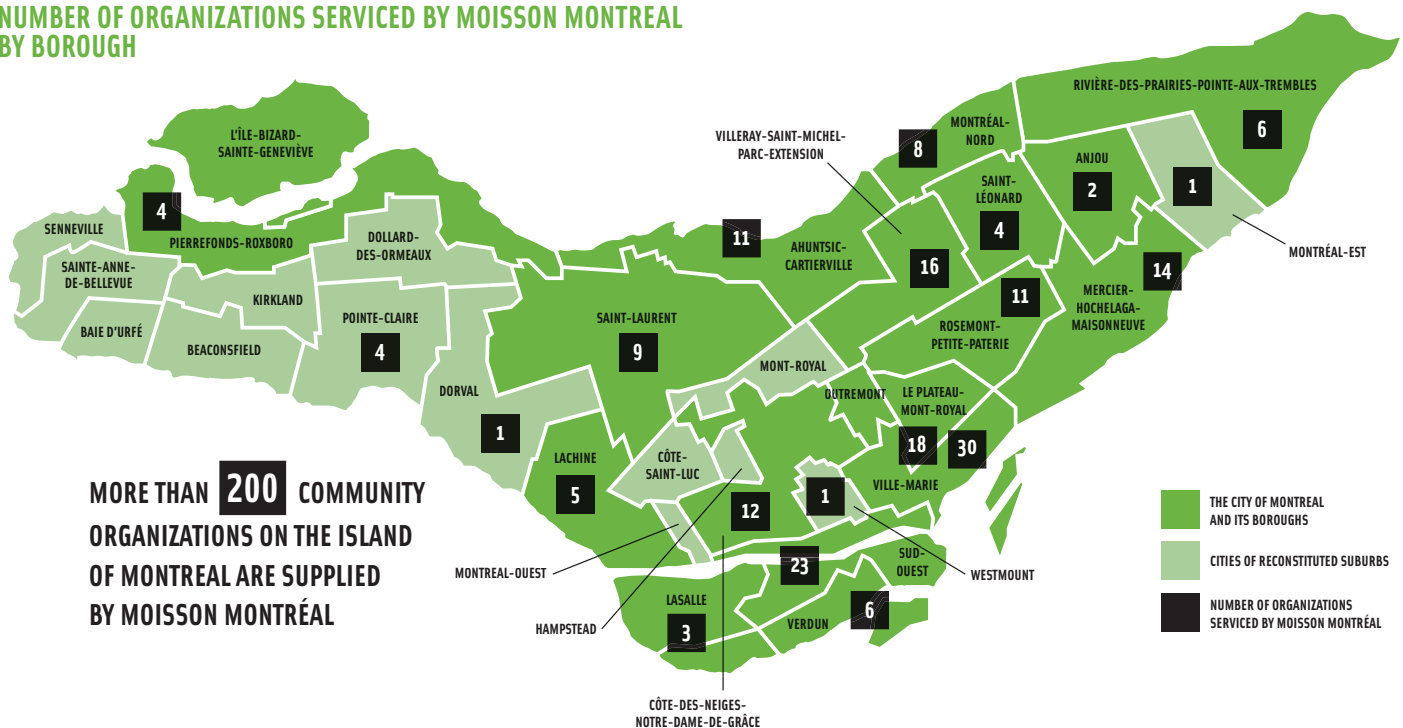
- food aid centers;
- shelters;
- schools;
- meals on wheels;
- collective kitchens;
- other.

Some provide more than one type of service:

- 151 provide emergency food aid;
- 137 provide meal services.

At the beginning of the year, the team implemented a satisfaction survey intended for the organizations we supply in an effort to gain greater knowledge of their needs and to adequately meet them.

NUMBER OF ORGANIZATIONS SERVICED BY MOISSON MONTREAL BY BOROUGH



MORE THAN 200 COMMUNITY ORGANIZATIONS ON THE ISLAND OF MONTREAL ARE SUPPLIED BY MOISSON MONTRÉAL

■ THE CITY OF MONTREAL AND ITS BOROUGHS
■ CITIES OF RECONSTITUTED SUBURBS
 NUMBER OF ORGANIZATIONS SERVICED BY MOISSON MONTRÉAL

“The efforts deployed by Moisson Montréal are undeniably proficient in improving the diet and the quality of life of so many citizens and help maintain their physical and moral health.”

SOCIÉTÉ SAINT-VINCENT DE PAUL DE MONTRÉAL CONFÉRENCE SAINT-PIERRE-AUX-LIENS, ORGANIZATION WE SUPPLY



GOOD FOOD BOX (GFB)

Created in 2002, the program then expanded in 2007 and is constantly growing all over Greater Metropolitan Area neighbourhoods. The goal of the GFB program is to provide Montreal residents with access to a variety of fresh, quality fruit and vegetables at affordable prices, especially people living in food deserts. For the most part, products are purchased from local growers. Clients can choose from three suggested sizes according to their needs. Distribution of the food boxes is carried out via service points overseen by responsible volunteers.

The Good Food Box is:

- More than 160 points of service, spread across 30 boroughs and cities related to Montreal, Laval, Roussillon/Rive-Sud, Laurentides/Lanaudière;
- 30,110 boxes filled and distributed over the Island of Montreal, representing a 30% increase over the past year;
- 5,872 people receive goods every month on the Island of Montreal, a 31% increase over last year;
- Included in 11 member-markets for 137 days from June to November of last year. Local growers provided 87% of all fruit and vegetables.
- A new GFB website in which users can get all of the program's relevant information. Furthermore, clients can locate their nearest service point. www.bonneboitebonnebouffe.org

Thanks to all the Good Food Box financial partners: Centraide, *La Fondation Marcelle et Jean Coutu*, *Le Fonds de bienfaisance des employés de Bombardier Aéronautique* and *L'Œuvre Léger*.



“ALIMENTER LE FUTUR”: FEEDING THE PRESENT FOR A HEALTHY FUTURE

In the summer of 2011, this program helped provide 27,300 lunches to over 600 children attending day camps located in underprivileged neighbourhoods. The event's spokesperson, Mrs Isabelle Huot, DtP, PhD, also designed and created healthy menus. Many thanks to our loyal partner SODEXO.



HUNGER COUNT

In March 2011, the team compiled 194 surveys completed by organizations and collected all of the information to establish a new representation of hunger in Montreal. The 2011 Hunger Count was published on November 16.

REGROUPEMENT D'ACHAT DES ORGANISMES COMMUNAUTAIRES (RAOC)

Now in its second year of existence, the RAOC (purchasing collective for community organisations) is operating smoothly with over 125 member organizations, double last year's number, and 4 associated suppliers. Thank you to our vital partners:

- La Corbeille Bordeaux-Cartierville;
- Le Regroupement des Magasins-Partage de l'île de Montréal;
- L'organisation des jeunes de Parc-Extension;
- Le comité des organismes sociaux de Saint-Laurent;
- La Table Ronde de St-Léonard.



VOLUNTEERS AND HUMAN RESOURCES

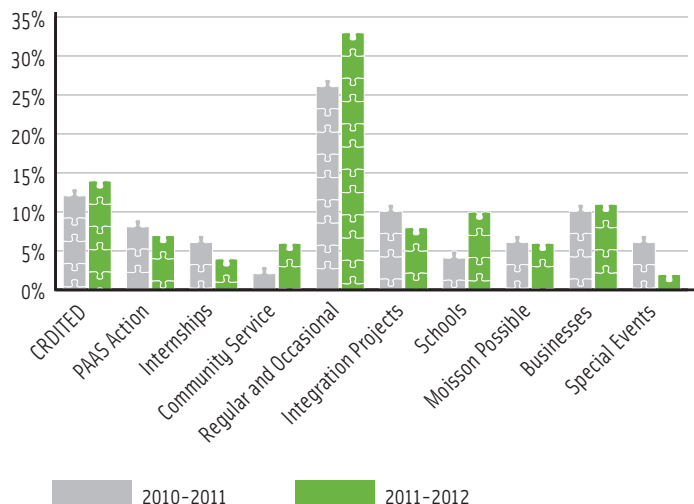
We provide all of the elements to build a stronger and motivated team: greeting, structure, integration, insertion, recognition and support.

VOLUNTEERS: THE KEY INGREDIENT

Moisson Montréal couldn't operate without the commitment and generosity of its people, they come from all walks of life and give their time to sort foodstuffs, prepare orders, wash boxes, participate in events and perform administrative tasks. More than 40 volunteers are required each and every day to optimally conduct our standard operations.

In 2011-2012, we were assisted by 4,758 volunteers and they, as a whole, worked 67,066 hours, which is the equivalent of 38 full-time employees! This is an increase in volunteer participation of almost 20% over last year.

VOLUNTEER PROVENANCE VS PERCENTAGE OF HOURS WORKED



PRESTIGE AND EMERITUS VOLUNTEER GROUPS

- Bombardier Aerospace;
- CRDITED de Montréal – Sector North;
- Deloitte & Touche;
- École Dorval-Jean-XXIII;
- École secondaire St-Laurent;
- Espace Jeunesse;
- KPMG;
- MIRE;
- Resto Plateau;
- UPS;
- Valorisation Jeunesse.

“We’ll be back next year. We hope this becomes a tradition as part of our community health classes.”

NURSING TEAM, MCGILL UNIVERSITY



VALORISATION JEUNESSE – MAKE ROOM FOR THE NEXT GENERATION

In the summer of 2011, as part of the “*Valorisation Jeunesse – Place à la relève*” program in partnership with the City of Montreal and the *Ministère de l’Immigration et des Communautés culturelles* and for the third year in a row, Moisson Montréal had the opportunity to enjoy the help of a dozen students about to finish their general high school degree. This initiative, with students coming from cultural backgrounds, provided them with a summer job and structured training that will be a great addition to their résumés and add to their overall skills.



SERVICE DE RÉADAPTATION CRDITED DE MONTRÉAL - SECTOR NORTH

On average, there are 6 adults with a mental deficiency or a pervasive developmental disorder helping Moisson Montréal employees every day. By integrating them into the team, we provide them with an opportunity to develop their skill set, gain greater independence and feel useful and appreciated.

A UNIQUE PLATFORM FOR APPRENTICESHIPS FROM ALL SECTORS OF ACTIVITY

Moisson Montréal also welcomed about fifteen apprentices, local and international students, and provided them with an opportunity to experience an nourishing experience in their field of study: human resources, community liaison, administration.

HEALTH AND SAFETY COMMITTEE

The goal of this new committee is to:

- raise awareness and educate employees and volunteers as to the safety standards in effect;
- improve work procedures to prevent accidents;
- improve and increase employee and volunteer vigilance in all aspects of using and handling dangerous equipment.

THE “RÉCOLTE” AWARD PAYS TRIBUTE TO INSPIRING AND INSPIRED EMPLOYEES

Every quarter, one employee is chosen by their peers to receive an award for their commitment to embrace the values shared by Moisson Montréal as part of their job.

ACTION PROGRAM

Since September 2010, the *Centre de ressources éducatives et pédagogiques* (CREP) of the CSDM has been providing Moisson Montréal with two teachers, full and part-time, to train and follow-up with regular volunteers who express a desire to better themselves. The ACTION program provides assistance and social support that fosters social integration, development and access to the workplace. Since September 2011, among the 42 participants in the social and professional insertion program Moisson Montréal with the support of CREP, has helped more than 10 volunteers enter the workplace and 4 return to school.



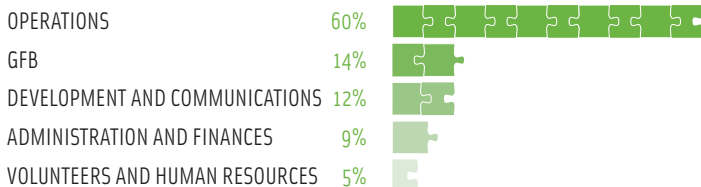
DEVELOPMENT AND COMMUNICATIONS

The primary goals of this constantly expanding team is to develop the Moisson Montréal image and ensure the continuity of its services.

\$1 SPENT = \$15 OF DISTRIBUTED FOODSTUFF

Thanks to the concerted efforts of every department, the upgrade of our operations and the generosity of our various partners, Moisson Montréal was able to improve its leverage through a better and wider distribution.

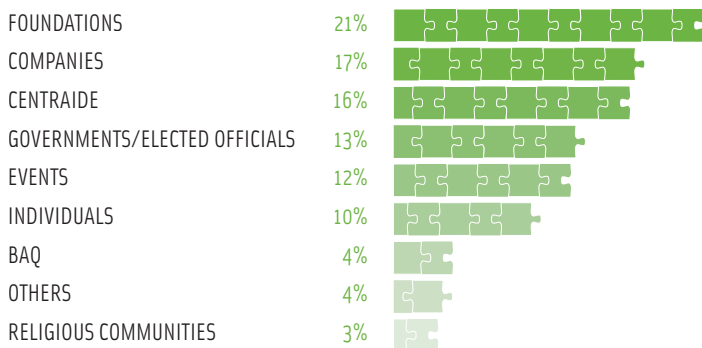
WHERE DO ALL THE DONATIONS GO?



PRESTIGE AND EMERITUS MONETARY CONTRIBUTORS

- Agence de la santé et des services sociaux de Montréal – PSOC;
- Banque Nationale Groupe Financier;
- Centraide of Greater Montreal;
- Fondation EJLB;
- Fondation J. Armand Bombardier;
- Fondation J.A. DeSève;
- Fondation Marcelle et Jean Coutu;
- Fonds de bienfaisance des employés de Bombardier Aéronautique;
- La grande guignolée des médias;
- The CAW Social Justice Fund;
- Le Groupe Jean Coutu (PJC) inc.;
- Les Résidences Soleil – Groupe Savoie;
- Ministère de la Santé et des Services sociaux du Québec;
- Roxboro Excavation inc.;
- The Hay Foundation inc.;
- Ville de Montréal;
- Walmart Canada Corp.;
- West End Building and Maintenance Reg'd ;
- Zeller Family Foundation.

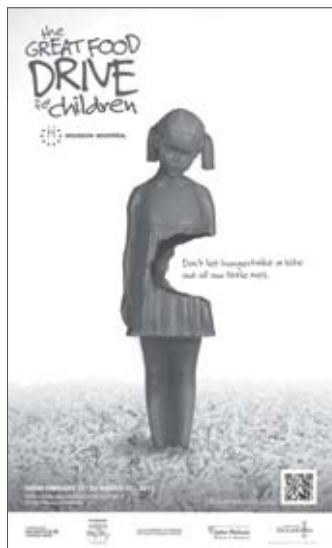
CONTRIBUTION PROVENANCE



FUNDRAISING ACTIVITIES AND THEIR RESULTS

Mass Mailing: Two mailing campaigns raised \$293,342. Thanks to all the generous donors!

The 9th Annual Golf Classic held at the Golf St-Raphaël on Île-Bizard with Mr. Robert Sawyer, Executive Vice-President and Chief Operating Officer with Métro, acting as honorary chairman for the event raised \$227,631, an increase of \$38,000 over last year. Thank you to everyone who participated and made this event a resounding success!



The great Food Drive for the children:

The great Food Drive for the children is a new campaign that was held from February 21 to March 31 of this year; its goal was to collect non-perishable foods for very young children. We collected more than 6,600 kg of food and \$37,000. We wish to extend our deepest gratitude to our partners: Jos Lebel-Containers, *Complexe Desjardins*, *Galleries d'Anjou*, *Carrefour Angrignon*, Concordia University John Molson School of Business and the *Salon Maternité Paternité Enfant*. In fact, Moisson Montréal took advantage of its presence at the Salon to collect surplus inventory from exhibitors and was able to collect some 2,000 kg of surplus merchandise.

The campaign ended April 1st with a half day of sorting activities under the theme of a Children's Party. Young and old were given the opportunity to sort foodstuff, have fun, enjoy games and entertainment.

A NEW MEMBER OF THE MOISSON MONTRÉAL FAMILY

In 2011, Moisson Montréal concluded an agreement with MORROW to help us design and prepare our communication tools. The 2010-2011 and 2011-2012 annual reports, the campaign "*la grande récolte pour les enfants*", the 10th Annual Golf Classic are just a few of their incredible accomplishments. Welcome and thank you to our new partner!

HIGHLIGHTING COMMUNITY COMMITMENT

We wish to highlight the crucial contribution of the many organizations whose commitment to the community encouraged them to raise funds and foodstuff for Moisson Montréal:

- BDO Canada, LLP;
- Bicks;
- Hockey for Huggies campaign, NHL Foundation;
- Casa Cares;
- ESG UQAM with their campaign "*Partagez votre engagement envers les plus démunis*";
- PMS Golf Tournament-Montreal and ESG-UQAM network;
- Five Hole For Food;
- Loblaws spring campaign "Extra Helping" food drive;
- La grande guignolée des médias;
- Lolë clothing manufacturer and its "Yellow Label" used coat recovery and recycle program;
- Cargill Limited Canada Golf Tournament;
- Canadian Pacific Holiday Train (CP);
- Rogers Communication/Fido Solutions;
- SIFE Concordia;
- And many other organizations and individuals.



BOARD OF DIRECTORS



Richard Blain, MBA, CHRA
 President
 Associate Director, SECOR, Consulting Firm



Daniel C. Hansen (absentee on the photo)
 Vice President
 President, HANSEN, Public Affairs



Alain Denis, MBA (absentee on the photo)
 Vice President
 Senior Vice President of New Economy
 Fonds de solidarité FTQ



Pierre G. Brodeur, CA (absentee on the photo)
 Vice President – Finance
 Associate, Deloitte & Touche LLP



Me Gilles Carli
 Secretary
 Associate, Fasken Martineau



Dany Michaud
 Ex-officio
 Executive Director, Moisson Montréal



Christine Beaulieu
 Administrator
 President, Gestion Christine Beaulieu



Christian Lamarre, BAA, GPA
 Administrator
 Vice President, Investment Advisor
 Portfolio Manager, National Bank Financial



Pierre Gagnon
 Administrator
 Director, Infrastructure Services, CAE



Patrick Dumais, CRHA
 Administrator
 Vice President, Human Resources
 Aliments ULTIMA Inc. (Yoplait)



France Joyal, MBA
 Administrator
 Director, Investment Monitoring
 Investissement Québec



Sylvie Rochette
 Administrator
 Executive Director
 Regroupement des Magasins-partage de L'île de Montréal



Eddy Savoie Jr (absentee on the photo)
 Administrator
 President, Construction Groupe Savoie

BALANCE SHEET

MARCH 31 st	2012	2011
CURRENT ASSETS		
Cash	\$ 1,411,270	\$ 553,161
Money market funds	431,151	425,530
Accounts receivable	79,008	53,473
Inventories	1	1
Prepaid expenses	16,105	166,717
Advance receivable without interest, maturing May 31 st , 2012	6,538	-
	1,944,073	1,198,882
INTANGIBLE ASSET	81,487	5,900
CAPITAL ASSETS	7,532,542	7,438,902
TOTAL ASSETS	\$ 9,558,102	\$ 8,643,684
CURRENT LIABILITIES		
Accounts payable and accrued charges	\$ 409,778	\$ 353,617
Deferred contributions related to specific projects	13,773	253,331
Deferred revenue	5,103	15,617
Required payment towards capital leasing contract	82,947	78,162
Current portion of long-term debt	41,398	-
	552,999	700,727
OBLIGATION UNDER CAPITAL LEASE	220,803	303,314
LONG-TERM DEBT	482,223	-
DEFERRED CONTRIBUTIONS RELATED TO CAPITAL ASSETS	3,459,235	3,253,856
NET ASSETS		
Internal allocations		
Invested in capital assets	3,327,423	4,035,767
Food processing	850,000	-
La grande guignolée des médias (Christmas baskets)	10,000	10,000
Unrestricted	655,419	340,020
	4,842,842	4,385,787
TOTAL LIABILITIES AND NET ASSETS	\$ 9,558,102	\$ 8,643,684

YEAR END MARCH 31 st	2012	2011
RECOVERED DONATIONS REDISTRIBUTED AS FOOD PRODUCTS	\$ 55,954,072	\$ 45,548,670
REVENUE		
Donations	\$ 2,284,158	\$ 2,222,092
Fundraising activities	1,290,346	856,735
Contributions	611,663	591,254
Other activities	481,154	359,390
Rental and interest	181,577	159,657
Write-off of deferred contributions related to capital assets	-	61,081
Amortization of deferred contributions related to capital assets	167,196	73,302
Gain on disposal of property and equipment	4,500	-
	5,020,594	4,323,511
EXPENSES		
Operations		
Food supplies	1,385,633	1,061,687
Transportation	495,508	530,566
Maintenance of building	702,144	386,750
Community liaison	160,827	170,327
	2,744,112	2,149,330
Fundraising activities	135,267	141,421
Activity development	420,597	269,250
Good Food Box	649,338	585,522
Management		
General directorate and finance	396,593	365,896
Human resources	217,632	213,102
	614,225	578,998
	4,563,539	3,724,521
EXCESS OF REVENUE	\$ 457,055	\$ 598,990

Petrie Raymond, comptables agréés – S.E.N.C.R.L.

DONATEURS MONÉTAIRES / FINANCIAL DONORS

PRESTIGE / PRESTIGE

Centraide du Grand Montréal
Fondation J. Armand Bombardier
Fondation J.A. DeSève
Fondation Marcelle et Jean Coutu
La grande guignolée des médias
Ville de Montréal

ÉMÉRITE / EMERITUS

Agence de la santé et des services sociaux de Montréal - PSOC
Banque Nationale Groupe Financier
Fondation EJLB
Fonds de bienfaisance des employés de Bombardier Aéronautique
Le Fonds de justice sociale des TCA-Canada
Le Groupe Jean Coutu (PIC) inc.
Les Résidences Soleil - Groupe Savoie
Ministère de la Santé et des Services sociaux
Roxboro Excavation inc.
The Hay Foundation inc.
Walmart Canada Corp.
West End Building and Maintenance Reg'd.
Zeller Family Foundation

OR / GOLD

Fondation de bienfaisance des employés de BMO
Fondation René Malo
L'Œuvre Léger

ARGENT / SILVER

Bloomberg
CAE
Caisses Desjardins et Fédération des Caisses Desjardins
Cargill Limited Canada
Chenaï Import Export
Conférence régionale des élus de Montréal
Courchesne Larose Ltée
Fidelity Investments
Fondation Boucher-Lambert
Fondation de la Corporation des Concessionnaires d'Automobiles de Montréal
Fondation Léo Brossard
Fonds de charité des employés de la CUM

Fonds de solidarité des travailleurs du Québec (FTQ)
FTQ Construction
Groupe TMX Bourse de Montréal
Industrielle Alliance
Investissement Québec
JTI MacDonald
Kraft Canada
L2i Solutions Financières
La Distillerie
La Fondation de bienfaisance T.A. Saint-Germain
La Fondation Familiale Trottier
La Fondation Macdonald Stewart
LCL Navigation
Loblaws Inc. (Provigo, membre du groupe Loblaws)
Malouf Family Fund
Marché aux Puces Métropolitain
Ministère de l'Agriculture, des Pêcheries et de l'Alimentation
Ministère des Affaires municipales, des Régions et de l'Occupation du territoire
Olympia Tile International Inc.
OSISO Canada ULC
Power Corporation du Canada
Quick Edge
Rachel Ship Foundation
Régular inc.
Samson Bélair/Deloitte & Touche
Société de Fiducie Computershare du Canada
SPB Psychologie organisationnelle inc.
The Lauridell Foundation
The Pampered Chef

BRONZE / BRONZE

3M Canada Company
Acosta Canada
Agropur coopérative
Alice and Euphenia Stewart Family Foundation
Aliments Dole du Canada Ltée
Arneg Canada inc.
Association des employés retraités de la Ville de Montréal
Association des étudiants du Collège Mont-Royal (AECMR)
Assurances Lucien Ledoux Inc.

Audiologie Centre-Ouest inc.
Avensys
Bellemont Powell Ltée
Bentall Kennedy (Canada) LP
Bizerba Canada inc.
Boulangeries Weston Gadoua inc.
Bourassa Boyer Inc.
Brasserie Labatt
Canadawide inc.
Capella Telecommunications Inc.
Cascades Groupe Tissu
Ceres Medical inc.
Chiropratique familiale St-Joseph
Circonscription de Jacques-Cartier
Circonscription de Mercier
Circonscription de Notre-Dame-de-Grâce
Circonscription de Saint-Henri - Sainte-Anne
Circonscription de Saint-Laurent
Coca-Cola Refreshments
Collège Jean-Eudes
Compagnie France Film Inc.
Concord Premium Meats
Confédération des Syndicats Nationaux (CSN)
Connor, Clark & Lunn Foundation
Construction Vergo
Croesus Finansoft inc.
Danone inc.
Davies Ward Phillips & Vineberg
Diffusion Dreux inc.
Dillon Groupe Conseil Limitée
Éditions Infopresse
Église méthodiste libre de Rosemont
Einstein Design inc.
Emballages CRE-O-PACK International Inc.
Eskimo Espresso
Faucher Industries Inc.
Fédération autonome de l'enseignement (FAE)
Fédération des professionnelles et des professionnels de l'éducation du Québec (CSQ)
Fondation d'aide directe - SIDA Montréal
Fondation Denise et Guy St-Germain
Fonds de bienfaisance des pompiers de Montréal

Fraternité des policiers et policières de Montréal
Gestion A.P. Leblanc Inc.
Gestion Yves Simard Ltée
Gildan Activewear Inc.
Groupe Éthier Inc.
Groupe Investors Programme Don pour don
Groupe KWA - Optimum Talent
Groupe Morzaco Inc. (FASRS Les Marronniers)
HANSEN, affaires publiques
Hélisastien inc.
Howick Foundation
IBM Canada Ltée
Ingrédients Alimentaires BSA inc.
Jardins Nelson Inc.
JD Marketing inc.
Jet de Sable Houle Sandblasting
La Coop fédérée
Le Syndicat des employé(e)s des Anciens combattants (SEAC)
Lecavalier Transport
Les Constructions de Mausolées Carrier inc.
Les Constructions Dutran inc.
Les Distributions Marc Boivin (2007) inc.
Les Fermes Sunchef inc.
Les logiciels INFORMAT inc.
Les Productions Robert Marien Inc.
Les Produits Alimentaires Sager inc.
Les Professionnel(le)s en Soins de Santé Unis (PSSU)
Location Brossard inc.
Marinelli Anctil Art et Design inc.
McCarthy Tétraut S.E.N.C.R.L., s.r.l.
Medexpro
Meilleures Marques - Groupe St-Hubert Div. Détail
Ministère de l'Éducation, du Loisir et du Sport
Ministère de l'Immigration et des Communautés culturelles
Ministère des Ressources naturelles et de la Faune
Ministère du Travail
Molson Coors
Navada Ltée
Nestlé Purina Petcare Canada

Office National du Film du Canada (ONF)
Olymel
Patates Dolbec inc.
Pensionnat des Sacrés-Cœurs
Pizzeria Napoletana inc.
Plania
PriceWaterhouseCoopers
Procam Construction inc.
Produits Kruger
Produits Lubri-Delta inc.
Protech Foundation
Punda Mercantile Inc.
RCI Environnement
Reckitt Benckiser
Revue L'Alimentation
Royal Canadian Legion Branch 57
S.T. Maçonnerie Inc.
SECOR
SEP Technologies inc.
Services-conseil Garceau Inc.
SKF du Canada Limitée
Sleeman Unibroue Inc.
Sobeys Québec inc.
Société du Groupe d'emboûtillage Pepsi-Cola
Strategic Charitable Giving Foundation
Supremex inc.
Syndicat des cols bleus regroupés de Montréal
Syndicat des professeurs et professeures de l'Université du Québec à Montréal
TCA Québec
The Gazette
The Henry and Berenice Kaufmann Foundation
The Marjorie and Gerald Bronfman Foundation
TigerTel Communications inc.
Tink
Transport Xtra B inc.
Treats International Franchise Corporation
UAP inc.
Ultra Electronics
United Acoustics And Partitions (2003) Inc.
Van de Water - Raymond Ltée
Vantage Foods (ON) Inc.
Viandes du Breton

Certains donateurs préfèrent garder l'anonymat. Merci aux 518 organisations qui ont appuyé Moisson Montréal cette année. En 2011-2012, 2 600 donateurs individuels ont fait un don, dont 55 par versements mensuels et 3 par legs testamentaire. *Certain donors prefer to remain anonymous. Thank you to the 518 organizations that supported Moisson Montréal this year. In 2011-2012, 2,600 individuals made a donation, 55 of whom through monthly donations and 3 through a bequest.*

GROUPES DE BÉNÉVOLES / VOLUNTEER GROUPS

PRESTIGE / PRESTIGE

CRDITED de Montréal - secteur nord
École Dorval-Jean-XXIII
École secondaire St-Laurent
MIRE
Valorisation Jeunesse

ÉMÉRITE / EMERITUS

Bombardier Aéronautique
Deloitte & Touche
Espace Jeunesse
KPMG
Resto Plateau
UPS

OR / GOLD

Aéroport de Montréal
Air Canada
Carrefour Jeunesse St-Laurent
Centre de formation professionnelle de l'Ouest-de-Montréal
École secondaire Cavellier-De LaSalle
École secondaire d'Oka
École secondaire Soulanges
Fond de solidarité communautaire catholique congolaise de Montréal
HSBC
Kraft Canada
Morgan Stanley
PricewaterhouseCoopers
RSM Richter
Summit School
Y des femmes

ARGENT / SILVER

AIM CROIT
Arrondissement de LaSalle
Arrondissement de Verdun
Association pour la défense des droits sociaux du Montréal métropolitain
AXA
Baxter

BMO Banque de Montréal
Bristol-Myers Squibb
Cadets (musique des cadets de la région de l'Est)
Casino de Montréal
Collège Ahuntsic
Collège Bois-de-Boulogne
Concordia Live Center
Cuisine collective Hochelaga-Maisonneuve
École secondaire du Chêne-Bleu
École secondaire Antoine-de-St-Exupéry
École secondaire Jean-Grou
Eli Lilly
GE Capital
Golder et associés
IBM Canada
Intact Assurances
Ivanhoé Cambridge
Jonview et Rêvatours
La corbeille Bordeaux-Cartierville
La Maisonnée
La Ronde
La Senza - Limited Brands
Le grand chemin
L'Œuvre des Samaritains
Odan Laboratories Ltée
Pfizer
Service d'aide communautaire Anjou
Service d'interprète et d'aide aux réfugiés indochinois (SIARI)
Sysco Québec
TD Assurance
Telus
Trafalgar School
West-Island College
YMCA

BRONZE / BRONZE

Académie Roberval
Action Secours Vie d'Espoir
Afrique au féminin
Agence des services frontaliers
Arche Montréal

Association pour le développement jeunesse de Loyola
Assurance Missisquoi
Assurance XL
Auberge communautaire du Sud-Ouest
Auberge de jeunesse de Montréal
Auberge du cœur Le Tournant
Auberge Madeleine
Autodesk Canada Co.
Avaya
Banque de développement du Canada
Banque Nationale du Canada
Banque Royale Île-des-Sœurs
BD Sciences
Bélair Direct
Bentall Kennedy
Bonsecours
Bonsound
CAE
Caisse Desjardins Île-des-Sœurs
Réseau des carrefours jeunesse-emploi du Québec
Carrefour jeunesse-emploi / Jeunes leaders
Carrefour jeunesse-emploi / Hochelaga-Maisonneuve
CASA CAFI
Cascades
Cégep de Saint-Laurent
Centraide
Centre Bon Courage
Centre Champagnat
Centre communautaire La Patience
Centre d'action bénévole Bordeaux-Cartierville
Centre d'aide à la famille
Centre des femmes de Montréal
Centre des jeunes Boyce-Viau
Centre François-Michelle
Centre professionnel et technique Minto
Centre Soutien-Jeunesse
Centres Beauséjour
Chapters
COGID Canada

Collectif des entreprises d'insertion du Québec
Commission scolaire Marguerite-Bourgeois
Conseil régional pour personnes âgées
COOP Fédérée
Corporation L'Espoir
Croix Bleue
Cuisine collective de la paroisse Sacré-Cœur
Danone
Dopamine
Dynamite
Eaux Naya Inc.
Échange de services LaSalle
École Henri-Julien
École Notre-Dame
École Paul-VI
École secondaire Édouard-Montpetit
École secondaire La Dauversière
École secondaire La Baie
École secondaire Monseigneur-Richard
École secondaire Pierre-Laporte
Église évangélique baptiste Smyre
Ensemble dans l'action
Extended Hands
Financière des professionnels
Fondation partageons l'espoir \ Share the Warmth
Fonds de dépannage de l'Ouest-de-l'île
Groupe Réseau
Hydro-Québec
Information alimentaire populaire
Centre-Sud
Janssen Pharmaceutica NV
L'Essentiel
L'Itinéraire
L'Oréal
Loto-Québec
Lundbeck
Le regroupement des Magasins-Partage
Maison des jeunes de Bordeaux-Cartierville
Maison Tangente
Manuvie
Marriott Château Champlain
McGill University

Méta d'Âme
Montreal City West Baptist Church
Multi-Femmes
Nielson
OMNI LGM
Opération Placement Jeunesse
Orange Business Services
OSISO
Partage Amour Foi Espérance
People's Potato
P.E.Y.O. (L'Organisation des Jeunes de Parc-Extension)
Pharmascience
Polytechnique
PSB Boisjoli
Refuge pour les femmes de l'Ouest de l'Île
Reitmans
Rogers
Rosemont High School
SAMA
Service de nutrition et d'action communautaire (S.N.A.C.)
SNC-Lavalin
Société Saint-Vincent de Paul de Montréal
Telecheck
Trac-Montréal - Fédération interprofessionnelle de la santé du Québec (FIQ)
Travail de rue / Action Communautaire (TRAC)
Union United Church - Outreach Ministry
Université du Québec à Montréal - École des sciences de la gestion (ESG)
Van Houtte
Whirlpool Canada

Certains groupes de bénévoles préfèrent garder l'anonymat.

Certain groups of volunteers prefer to remain anonymous.

DONATEURS DENRÉES A1 / A1 FOODSTUFFS SUPPLIERS

ÉMÉRITE / EMERITUS

A.V. 2000 Inc.

OR / GOLD

Les Aliments Multibar inc.
Olymel S.E.C.
Saputo Boulangerie Inc.

ARGENT / SILVER

Distributions DPL
I-nov concept Inc.
Maître Saladier
Pearlmark Foods inc.

BRONZE / BRONZE

Aliments Newly Weds
Ardoise Design Communications inc.
Exceldor, Coopérative avicole
Fromageries Bel Canada
Gattuso Inc.
Les Jardins de Tessa

Les Midis Santé
Madame Michèle Ruel et Monsieur Alain Bracchi

Certains donateurs préfèrent garder l'anonymat.
Certain donors prefer to remain anonymous.

ORGANISMES RÉGULIERS ET SAISONNIERS DESSERVIS / ORGANIZATIONS RECEIVING ASSISTANCE

AHUNTSIC / CARTIERVILLE

Accueil Émilie
Bouclier d'Athéna – Services Familiaux
Centre d'action bénévole Bordeaux-Cartierville
École Félix-Antoine
Le Foyer du Liban
L'Œuvre des Samaritains
La Corbeille Bordeaux-Cartierville
Maison des jeunes Bordeaux-Cartierville
Prise II
Rap Jeunesse (volet L'Accès-Soir)
Service de nutrition et d'action communautaire (SNAC)

ANJOU

Centre humanitaire d'organisation de ressources et de références d'Anjou (C.H.O.R.R.A.)
Service d'aide communautaire Anjou (SAC)

MERCIER / HOHELAGA / MAISONNEUVE

Association pour la défense des droits sociaux de Montréal Métropolitain (ADDS-MM)
Auberge du cœur FJTTM
Centre d'entraide le Rameau d'Olivier inc.
Centre Naha
Chic Resto-Pop
Cuisine collective Hochelaga-Maisonneuve
Dopamine
Réseau Providence
GÉMO : Groupe d'entraide de Mercier-Ouest
La Maison du Pharillon
L'Escale Notre-Dame
Maison de réhabilitation L'Exode
Maison Tangente
Service d'éducation et de sécurité alimentaire de Mercier-Est (SÉSAME)

MONTRÉAL-EST

Action Secours, Vie d'Espoir

POINTE-CLAIRE

Corbeille de pain /
Bread Basket Lac Saint-Louis
Parrainage civique de la banlieue Ouest /
West Island Citizen Advocacy
Royal Canadian Legion BR.57
West Island Mission

RIVIÈRE-DES-PRAIRIES / POINTES-AUX-TREMBLES

Centre d'aide familiale éducative et sociale « De tout repos »
Centre d'entraide aux familles (CEAF)
Centre Bienfaisance Mont-Sinaï
Coopérative d'habitation Giron d'aile
Centre local d'initiatives communautaires du Nord-Est de Montréal (CLIC)
Cuisine collective à Toute Vapeur

ROSEMONT / LA PETITE-PATRIE

Centre de Ressources et d'action communautaire de la Petite Patrie (CRAC)

Auberge communautaire du Sud-Ouest
Bethleem Healing Fountain
Bible-Way Pentecostal Church
Community Center Tyndale St-Georges - Centre communautaire Tyndale St-Georges
Continuité - Famille auprès des détenues (C.F.A.D.)
Dépannage alimentaire église catholique Saint-Charles
James Lyng High School
L'Arche-Montréal
La Maison du partage d'Youville
Logifem
Maison d'entraide St-Paul/Émard
Maison des jeunes Escampette
Mission Bon Accueil/
Welcome Hall Mission
Mission du Grand Berger
Réseau Providence
Scientifines (Les)
Share The Warmth Foundation -
Fondation Partageons l'Espoir

VILLE-MARIE

Accueil Bonneau
Action Centre-Ville
Rézo (Santé et mieux-être des hommes gays et bisexuels)
Aids community care Montreal (ACCM)-
Sida bénévoles Montréal
Association bénévole Amitié
Carrefour Saint-Eusèbe
Centre d'Action Sida Montréal (Femmes) (CASM)
Centre d'entraide et de Ralliement Familial (CERF)
Coalition Sida des Sourds du Québec
Comité social Centre-Sud
Nazareth House / Maison Nazareth
Cuisine collectives de la paroisse Sacré-Cœur
Dispensaire diététique de Montréal
Fondation d'aide directe-SIDA Montréal
Fondation du Refuge pour femmes chez Doris

CÔTE-DES-NEIGES / NOTRE-DAME-DE-GRÂCE

Au Pois Chic – La cuisine de NDG
Cafétéria communautaire MultiCaf
Centre communautaire de loisirs de la Côte-des-Neiges
Centre communautaire Mountain Sights
Services sociaux Hellénique de Québec de la communauté Hellénique du Grand Montréal
Dépôt alimentaire NDG/ N-D-G. Food Depot
Jamaica Association of Montreal /
Association jamaïcaine de Montréal
MADA Community Center / Centre communautaire MADA
Relais Côte-des-Neiges
Résidence Projet Chance
SAIM : Service aux Aînés de Montréal
SIARI : Service d'interprètes, d'aide et de références aux immigrants

DORVAL

Omega community Resources

LACHINE

Carrefour d'entraide de Lachine
Comité de vie de quartier Duff-Court (COVIQ)
Extended Hands
Société de Saint-Vincent-de-Paul
Conférence Resurrection of Our Lord
Société de Saint-Vincent-de-Paul
Conférence Saint Pierre aux liens

LASALLE

Club Garçons et Filles de Lasalle
Cadre Échange de services de Lasalle
Maison des jeunes de Lasalle

MONTRÉAL-NORD

Bonsecours
Centre communautaire éducatif Philos
Centre communautaire multi-ethnique de Montréal-Nord
Centre d'aide humanitaire Co-héritiers
Co-Resto-Pop-Bec-Les jeunes étoiles scintillantes du Nord
Les Fourchettes de l'Espoir
Société St-Vincent-de-Paul conférence Montréal-Nord
Toxico-Stop

PIERREFONDS / ROXBORO

Fonds d'Aide de l'Ouest de l'Île
Maison Entre Famille
Nouvelle Vision des Jeunes
On Rock Ministries

PLATEAU-MONT-ROYAL

Centre A.S.P.A
Centre d'aide à la famille
Le Sac à Dos – Action et Réinsertion sociale
Association d'entraide Le Chaînon
Autisme et troubles envahissants du développement Montréal (ATEDM)
Centre le Beau Voyage inc.
Centre des femmes de Montréal
Corporation Félix-Hubert d'Hérelle
Dîners Saint-Louis
La Maison des Amis du Plateau Mont-Royal
L'Hirondelle Services d'accueil et d'intégration des immigrants
Mile End Community Mission /
Mission communautaire du Mile End
Multi-Femmes
Native Friendship Centre of Montréal (NFCM)
Paroisse Immaculée Conception
Resto Plateau
Santropol roulant
St-Michael's Mission

Compagnons de Montréal
Comptoir alimentaire Église Évangélique de Rosemont (Garde-Manger Familial)
Église méthodiste libre de Rosemont
Service d'aide et de liaison pour immigrants/ La Maisonnée
La Maisonnée des parents
L'Oasis des enfants de Rosemont
Mission Catholique Espagnole (Montréal)
Montréal City Mission / Mission communautaire de Montréal
Ma Maison Saint-Joseph Petites Sœurs des Pauvres
Première Église Roca de Salvación

SAINT-LAURENT

Centre communautaire Bon Courage de Place Benoît
Centre d'encadrement pour Jeunes Filles Immigrantes (CEJFI)
Centre Soutien-Jeunesse de Saint-Laurent
Corporation culturelle latino-américaine pour l'amitié (COCLA)
Le Garde-Manger des Moissonneurs
L'Oasis de Saint-Laurent
Relais Laurentien
Ressources Jeunesse de Saint-Laurent
Simonet, Réseau de soutien et de service pour mères monoparentales

SAINT-LÉONARD

Association Haïtiano-Canado-Québécoise de promotion culturelle et artistique d'aide aux démunis
Centre Communautaire Philadelphie
Mouvement Fraternité Multi-Ethnique
Société de Saint-Vincent-de-Paul
Conférence Saint-Léonard

SUD-OUEST

Armée du Salut/ The Salvation Army
Atelier 850
Au Nom de l'Amour

St-Anthony's Parish
St-Columba House/ Outreach
St-Gabriel's Parish
Union United Church-Outreach Ministry

VERDUN

Centre d'aide aux familles immigrantes (Casa Cafè)
Charité Soleil Levant
Manna Verdun Food Bank
Réseau d'entraide de Verdun
Saint-Vincent-de-Paul, Conférence de Verdun
Toujours Ensemble

VILLERAY / SAINT-MICHEL / PARC-EXTENSION

Afrique au féminin
Carrefour populaire Saint-Michel
Centre communautaire CEFEDI
Centre communautaire Rendez-Vous 50 +
Centre communautaire La Patience
C.O.P.A.T.L.A. : Centre d'orientation et de prévention d'alcoolisme et de toxicomanie latino-américain
Centre Sainte-Croix
Comité Canada soins relève vie
Comptoir alimentaire Villieray
CRAIC : Conseil Régional des Personnes Âgées Italo-Canadiennes
Cuisines et vie collectives Saint-Roch
La Maison de Quartier Villieray
Les Centres Bonséjour
Maisonnée Familiale Villieray
Mon Resto Saint-Michel
Patro le Prévost
PEYO (L'Organisation des jeunes de Parc-Extension)
Seniors Association « FILIA » -
Association du troisième âge « FILIA »
Service Myriam de la Miséricorde

Auberge du cœur Le Tournant
Information alimentaire populaire Centre-Sud
Jojo Dépannage
La Maison Benoît Labre
Les Œuvres de la Maison du Père
L'itinéraire (Café sur la rue)
Maisons Adrianna
Méta d'Âme
Mission Latino-Américaine Notre-Dame-de-la-Guadalupe
Old Brewery Mission
Projet d'intervention auprès des Mineurs-es. Prostitués-es. P.I.A.M.P.
Projet LOVE
Refuge des jeunes de Montréal
St-James Drop In
The People's Potato
Y des Femmes

WESTMOUNT

The Open Door

AUTRES ORGANISMES OTHER ORGANIZATIONS

Colonies Sainte-Jeanne d'Arc
La Dauphinelle
Maison Dalauze
Refuge pour les femmes de l'Ouest de l'Île
Inter-Val 1175
Maison du réconfort
Auberge Madeleine
Maison Flora-Tristan
Maison des enfants de l'île de Montréal
Centre des jeunes Boyce-Viau
Maisons de l'Ancre (Les)
Passages
65 organismes supplémentaires ont également été aidés sur une base ponctuelle.
65 other occasional organizations received assistance on a punctual basis.

FOURNISSEURS AGROALIMENTAIRES / AGRIFOOD SUPPLIERS

PRESTIGE / PRESTIGE

Alternative Processing Systems inc. (APS)
Banques alimentaires Canada *
Banques alimentaires Québec **
Chenail Import Export
Kraft Canada inc. *

ÉMÉRITE / EMERITUS

Agropur coopérative, division Natrel **
Boulangerie St-Méthode
Danone inc.
Fruits et légumes Gaétan Bono inc.
Les Aliments Bercy

OR / GOLD

Aliments Ultima inc. (Yoplait)
Botsis Fruits et Légumes
Boulangeries Weston Québec ltée
Courchesne Larose ltée
Les Jardins Paul Cousineau et Fils inc.
Metro inc.
Smucker Foods of Canada *
Ocean Spray of Canada Limited *

ARGENT / SILVER

A. Lassonde inc.
Boulangerie Au Pain Doré inc.
Corporation d'Aliments Ronzoni Canada **
Courtiers 9 Starz
J.B. Laverdure inc.
J.D. Marketing Inc.
Les Plats du Chef inc.
McCain Foods Canada *
Nestlé Canada inc. *
Sobeys Québec inc.

BRONZE / BRONZE

Aliment Sélect inc.
Aliments E.D. Foods inc.
Aliments Imex Foods inc.
Aliments Ouimet-Cordon Bleu inc.
Aliments Papco inc.
Alipro-Mistral Ingrédients inc.
Amaro inc.
André Gemme & Fils inc.
Arthur Roger & Assoc. Inc.
Bar Imex Int'l inc.
Baxters Canada inc.
Benny D'Angelo Fruits et Légumes
Bonbons Rio Candy inc.
Boulangerie Gadoua

Boulangerie Première Moisson
Boulangerie Sorrento
Boulart inc.
Bridor inc.
Bruce R. Smith
Cascades Groupe Tissu inc.
Champignons Highline
Damafro inc.
Défi Jeunesse Québec inc.
Distribution Frères Magid inc.
Distribution Horizon Nature inc.
Distributions Farinex, div. de 113712 Canada inc.
Dubord & Rainville inc.
Entreposage Herger inc.
ERB Transport ltée
Euro-Excellence inc.
Fédération des producteurs d'œufs de consommation du Québec **
Ferme Gaston Roy et fils
Ferme Jacques Riendeau
Ferme R.R. & Fils inc.
Ferme Van Velzen
Fermes Daniel Oligny
Frigo Liberté *
Frugisol International inc.
Fruits International
General Mills Canada Corp. *

Groupe Vegco inc.
Groupe Versa Cold inc.
Horizon Milling G.P., Société de Cargill
Hydro-Culture inc.
Importations et distributions B.H. inc.,
Div. Les Sœurs en Vrac
I-nov concept inc.
Ippolito Montréal inc.
Jardino Marketing inc.
Jardins FMS Daigneault inc.
Johnson & Johnson inc.
Kellogg's Canada inc. *
La Compagnie Meilleures Marques ltée
La Maison Sami T.A. Fruits inc.
La Tablée des Chefs
Laiterie Chagnon ltée
Laniel Canada inc.
Les Aliments Expresco
Les Aliments Lesters limitée
Les Aliments Levitts inc.
Les Compagnies Loblaw ltée **
Les Croustilles Yum Yum
Les Cuisines Rochette (1976) inc. **
Les Distributions Marc Boivin (2007) inc.
Les Fermes V. Forino et fils inc.
Les Jardins de Tessa
Les Maraîchers Bec Sucré inc.

Les Services Logistiques Trans West inc.
Luc Charbonneau Fruits et Légumes inc.
McMahon distributeur pharmaceutique inc.
Michel Desjardins ltée
Mosti Mondiale inc.
Multi-Markes inc.
Olymel s.e.c./l.p.
Parmalat Canada inc. **
Patates Daniel Blain ltée
Prana Biovégetaliens inc.
Premier Fruits et Légumes BBL inc.
Produits Phœnicia inc.
Produits Plaisirs Glacés inc.
Provigo inc.
Ray-Mont Logistiques inc.
Saladexpress inc.
Saputo inc. **
Satau inc.
Shapiro Fruits inc.
Sublime Desserts inc.
Sysco Québec
Tartco, div. de 9044-7426 Québec inc.
Veg Pro International inc.
Vegkiss inc.
Ventes Rudolph 2000 inc.
VTL Transport
Wong Wing Foods Inc.

Ainsi que d'autres partenaires réguliers et occasionnels. Certains donateurs préfèrent garder l'anonymat.

* Entreprises participant au Système national de partage des denrées de Banques alimentaires Canada. ** Entreprises participant au Système provincial de partage des denrées de Banques alimentaires Québec.

Nous remercions également les entreprises suivantes qui participent aussi au Système national de partage des denrées de Banques alimentaires Canada : Campbell, Canada Dry Mott's, ConAgra Foods Canada, Colgate-Palmolive Canada Inc., Danone Waters of America Inc., Dial (Henkel) Corporation, H.J. Heinz Company of Canada LP, Huggies, Giant Tigre Stores, KIK Custom Products, Kimberly-Clark, Ocean Spray of Canada Limited, PepsiCo Canada ULC et Post Foods Canada Inc.

As well as other regular and occasional partners. Certain donors prefer to remain anonymous.

* Enterprises that participate at Système national de partage de denrées of Canada Food Banks. ** Enterprises that participate at Système provincial de partage des denrées of Banques alimentaires Québec.

We also wish to thank the following enterprises that also participate at Système national de partage des denrées of Canada Food Banks: Campbell, Canada Dry Mott's, ConAgra Foods Canada, Colgate-Palmolive Canada Inc., Danone Waters of America Inc., Dial (Henkel) Corporation, H.J. Heinz Company of Canada LP, Huggies, Giant Tigre Stores, KIK Custom Products, Kimberly-Clark, Ocean Spray of Canada Limited, PepsiCo Canada ULC and Post Foods Canada Inc.

FOURNISSEURS DE BIENS ET SERVICES / GOODS & SERVICES SUPPLIERS

Accetis International
Agence de Maquillage Thaly
Agropur coopérative, division Natrel
Armando Betti, Encanteur
Arthur L'aventurier
Banque Nationale du Canada
Beaver Books Publishing
Bell Canada
Bentall Kennedy
Bijouterie Everest inc.
Brasserie Labatt ltée
CAE
Chenail Import Export

Club de Golf Saint-Raphaël
Danone inc.
DEP Distribution Exclusive ltée
Drakkar, Ressources Humaines inc.
Dylla Translation Services
Ferland Photo
Fondation du cancer du sein du Québec
Groupe DPI inc.
Groupe Investors inc.
H&R Block
Industries Goodwill Renaissance
Montréal inc.
Innu-Science Canada Inc.

Journal de Montréal
L2i Solutions financières
Le Local
Les Chocolats Geneviève Grandbois
Les Clowns du Carrousel
Les Contenants Jos. Le Bel Inc.
Les Industries Touch inc.
Lexam Prestige Canada inc.
Location d'outils Simplex
Ma Maison St-Joseph Petites Sœurs
des pauvres
Métallurgie des Appalaches inc.
Metro inc.

Ministère du Développement durable,
de l'Environnement et des Parcs
Montréal Auto Prix
MORROW
Naimex Marketing inc.
Nestlé Canada inc.
Paquette & Associés, s.e.n.c.r.l.,
Huissiers de justice
Pierre Fabre Dermo-Cosmétique
Canada inc.
Produits Plaisirs Glacés inc.
Revue L'alimentation
Samajam

Saputo inc.
Semi-remorques Wizards ltée
Siscom inc.
Starbucks
Sysco Québec
Tommy Hilfiger Canada inc.
Transport Robert (1973) ltée
UQAM - Département organisation
et ressources humaines - ESG UQAM
Via Rail Canada
Ville de Montréal - Arrondissement
de Saint-Laurent
Vins Philippe Dandurand

Merci également à tous les médias pour leur soutien. / Additional thanks to all media representatives for their support.

BAS DE VIGNETTE DES PHOTOS / PICTURE CAPTIONS

1. De gauche à droite: Rangée du bas (à genoux): Billy Provias, Nelson Bravo, René Salloum, Stéphane Wells, Daniel Roy – 2^e rangée: Ferdinand Minga, Christian Rathé, Guy Boulanger, Caroline Roussel, Danny Janson, Gabriel Garnier, Samuel Doumbé, Claude Maynard – 3^e rangée: Angel Macovei, Jean-Paul Rado, Abdel Saad, Jorge Recavarren, Miloud Benoudaa, Dupervil André.

2. De gauche à droite: Guy Charron (FPI Canmarc), André Labonté (Hydro-Québec), Linda Wilson (OAQ), Raymond Bouchard (IDU Québec), Denis Brisebois (AEMQ), Richard Garneau.

3. De gauche à droite: – 1^{ère} rangée (à genoux): Maxime Babeu, Guyto Muabi – 2^e rangée: Kaven St-Pierre, Myriem Salah, Jean-Pierre Kamgang, Marie-Ève Laramée.

4. Dans l'ordre habituel: Marie-Hélène Sicard, directrice marketing, Sodexo, Dany Michaud, directeur général, Moisson Montréal, Jon Kristjanson, directeur exécutif, Fondation Sodexo, Zakary O. Rhissa, directeur général, BAQ, Isabelle Huot, nutritionniste, Denise Bernachez, directrice régionale, Sodexo.

5. De gauche à droite: Maxime Babeu, Carole Janson, Audrey Lauzon-Laroche, Julie Vaillancourt, Lucie Gérin, Sylvie Allie, Abde Chouli, Philippe-Eugène Appolon, Robert Longtin.

6. Quelques participants de l'équipe Valorisation-Jeunesse 2011.

7. De gauche à droite: Audrey Lauzon-Laroche, Awa Diarra, Véronique Beaulac, Catherine Poirier, Sophie Gravel.

8. À gauche de la photo: Dany Michaud, directeur général, Moisson Montréal. À droite de la photo: Chantal Glenisson, vice-présidente principale, Est du Canada, WalMart Canada Corp., en compagnie de plusieurs associés du Wal-Mart de Chomedey.

9. Dany Michaud, directeur général, Moisson Montréal, France Joyal, coprésidente du comité, administratrice au ca de Moisson Montréal, Robert Sawyer, président d'honneur, vice-président exécutif et chef de l'exploitation de METRO inc., Christian Bourbonnière, vice-président principal – Québec de METRO inc. Christian Lamarre, coprésident du comité, président du conseil d'administration de Moisson Montréal.

1. Left to right: First row (on their knees): Billy Provias, Nelson Bravo, René Salloum, Stéphane Wells, Daniel Roy – Second row: Ferdinand Minga, Christian Rathé, Guy Boulanger, Caroline Roussel, Danny Janson, Gabriel Garnier, Samuel Doumbé, Claude Maynard – Third row: Angel Macovei, Jean-Paul Rado, Abdel Saad, Jorge Recavarren, Miloud Benoudaa, Dupervil André.

2. From left to right: Guy Charron (FPI Canmarc), André Labonté (Hydro-Québec), Linda Wilson (OAQ), Raymond Bouchard (IDU Québec), Denis Brisebois (AEMQ), Richard Garneau.

3. From left to right – 1st row (on their knees): Maxime Babeu, Guyto Muabi – 2nd row: Kaven St-Pierre, Myriem Salah, Jean-Pierre Kamgang, Marie-Ève Laramée.

4. In the usual order: Marie-Hélène Sicard, Marketing Director, Sodexo, Dany Michaud, Executive Director, Moisson Montréal, Jon Kristjanson, Executive director, Fondation Sodexo, Zakary O. Rhissa, Executive Director, BAQ, Isabelle Huot, nutritionist, Denise Bernachez, Regional Manager, Sodexo.

5. From left to right: Maxime Babeu, Carole Janson, Audrey Lauzon-Laroche, Julie Vaillancourt, Lucie Gérin, Sylvie Allie, Abde Chouli, Philippe-Eugène Appolon, Robert Longtin.

6. Few participants of the Valorisation-Jeunesse 2011 team.

7. From left to right: Audrey Lauzon-Laroche, Awa Diarra, Véronique Beaulac, Catherine Poirier, Sophie Gravel.

8. To the left: Dany Michaud, Executive Director, Moisson Montréal. To the right: Chantal Glenisson, Senior Vice President, Eastern Canada, Walmart Canada Corp., along with several associates from the Chomedey Walmart.

9. Dany Michaud, Executive Director, Moisson Montréal, France Joyal, Co-president of the committee, Administrator, Moisson Montreal Board of directors, Robert Sawyer, Honorary Chairman, Executive Vice-President and Chief Operating Officer with METRO inc., Christian Bourbonnière, Senior Vice-president – Québec with METRO inc. Christian Lamarre, Co-president of the committee, President, Moisson Montreal Board of directors.