

# ANNUAL REPORT

- 2014-2015 -



# A WORD FROM THE PRESIDENT AND THE EXECUTIVE DIRECTOR



## RICHARD BLAIN *President*

This past year has been an accurate reflection of our organization: results oriented and very successful. But success doesn't happen by chance. In our case, it is definitely the result of the hard work and dedication of all those who believe in Moisson Montréal's project and in the growing role that our organization plays in the struggle against food insecurity and waste in Montreal. As President of the Board of Directors, I have the privilege of witnessing the management team's strength and solidarity, qualities which enable us to achieve our goals and look towards the future with great optimism.

Consequently, in looking at the financial results from this 30<sup>th</sup> year of operations, my colleagues and I can only reiterate our support to the Moisson Montréal team. I couldn't give an overview of the last year without mentioning the food recovery program with supermarkets. Since October 2013, our audacity has allowed us to recover 411 tons of additional food in supermarkets to provide more volume and variety to our organizations.

I am proud to remind you that Moisson Montréal has now been supporting the Montreal community for over 30 years. The last year was made possible thanks to Moisson Montréal's determination and willingness to innovate by shaking up the status quo and helping Montrealers shed old habits in favour of more sustainable solutions that increase food security.

Let's keep working together to create a better future.

## OUR MISSION

- Ensure an optimal food supply to the community organizations that provide assistance to people in crisis on the Island of Montréal;
- Foster the development of sustainable solutions to ensure food security.



## DANY MICHAUD *Executive Director*

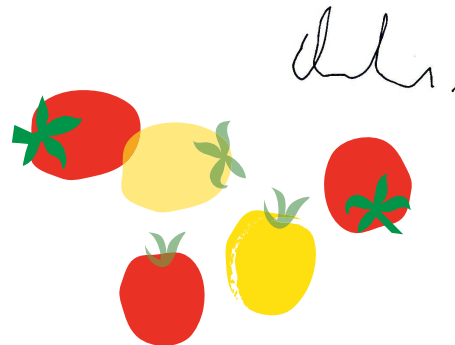
This year, Moisson Montréal celebrated its 30<sup>th</sup> anniversary. I am proud to see that despite the passing of time, our fundamental values are still strongly guiding our actions every day. Thanks to the efforts of our team and nearly 8,000 volunteers, we achieved all our annual goals and gave even more to our accredited organizations.

2014-2015 has been an exceptional year. Thanks to our team's relentless efforts, we have successfully reinforced our partner relationships to create compelling campaigns for foodstuff drives and fundraising events. I want to especially thank our partners and foundations, whose unparalleled support helped uphold our mission to help more than 140,000 needy adults and 38,000 children in Montreal every month.

Steadied by the enormous success of our food recovery program with supermarkets – with the meat portion, in particular – Moisson Montréal will undoubtedly continue to develop its food transformation activities in order to create more innovative and sustainable projects.

We must continue our efforts to build increasingly solid relationships in order to ensure that every dollar received by Moisson Montréal can soon be turned into \$20 of redistributed foodstuffs.

Thank you for supporting us through the last 30 years!



6880, chemin de la Côte-de-Liesse  
Montreal (Quebec) H4T 2A1  
T: 514 344-4494 F: 514 344-1833  
info@moissonmontreal.org  
www.moissonmontreal.org

2014-2015

# HIGHLIGHTS OVERVIEW

- **244 community organizations** across the Island of Montreal benefited from our services on a regular basis (an additional 50 received occasional assistance).

- According to the 2014 Hunger Count, **140,706 individuals**, including **38,345 children** (27% of beneficiaries) received food aid each month through partner organizations.

- **12.6 million kilos** of foodstuffs and other essential items were distributed, representing a total value of **\$60.9 million**.

- **235 agrifood businesses** donated foodstuffs.

- In 2014, **7,828 volunteers** put in more than **76,275 hours** to help us deliver our mission; their crucial support represents the work of **42 full-time employees**.

April 2014

3<sup>rd</sup> edition of the Great Food Drive for Children, in partnership with Uniprix

May 2014

12<sup>th</sup> annual Golf Classic at the Hillsdale Golf and Country Club in Mirabel

June 2014

1<sup>st</sup> participation at the Grand Evening, official opening event for the Grand Prix du Canada

July 2014

2<sup>nd</sup> annual Christmas at La Ronde

August 2014

Guinness World Record set at McGill University for the longest line ever of food cans (over 3km long!), benefiting Moisson Montréal

September 2014

Suspended Meals' pilot project, in collaboration with ARRQ, during the YUL-EAT Festival  
New partnership with Société des casinos du Québec

October 2014

2<sup>nd</sup> food drive event during La Ronde's Fright Fest

November 2014

Official launch of the new Moisson Montréal website  
2014 Recognition Evening  
Benefit concert by the Metropolitan Orchestra for Desjardins members

December 2014

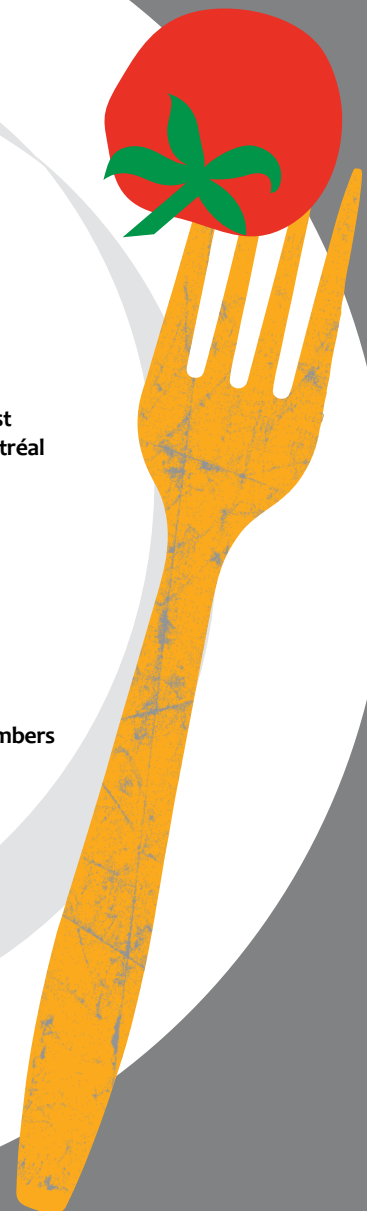
Grande guignolée des médias  
Free the Holiday Spirit  
Tri de Noël

January 2015

Happy New Year!

February 2015

Moisson Montréal celebrates its 30 years during the Conserve fundraising gala

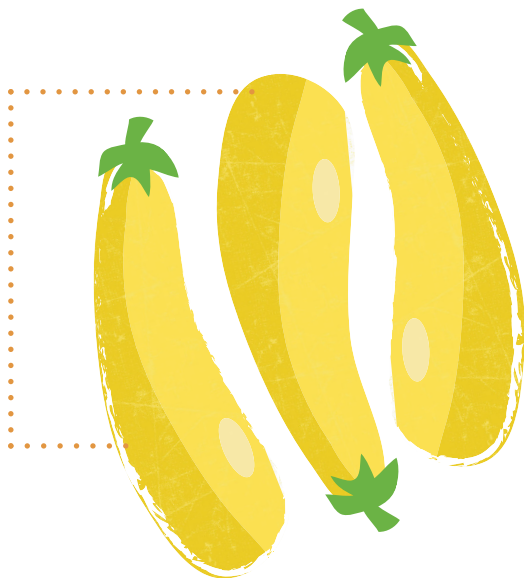


# UNITED FOR THE CAUSE

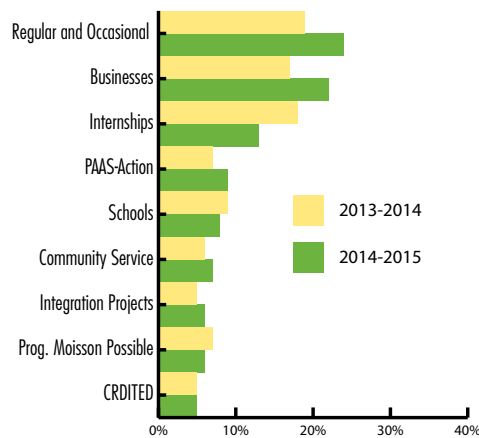
AT MOISSON MONTRÉAL, 50 EMPLOYEES WORK TIRELESSLY EVERY DAY TO FIGHT FOOD INSECURITY. IN 2014-2015, THEIR EFFORTS WERE SUPPORTED BY ALMOST 7,900 VOLUNTEERS, WHO HELPED KEEP OUR OPERATIONS GOING. MOISSON MONTRÉAL IS AN ADVOCATE OF EMPLOYMENT EQUITY AND OFFERS A SECURE WORK ENVIRONMENT THAT HELPS EMPLOYEES REACH THEIR FULL POTENTIAL AND THAT ENCOURAGES OPENNESS, RECOGNITION AND TEAM BUILDING.

## VOLUNTEERING PROGRAMS

In addition to welcoming volunteers from businesses, organizations and various institutions on a daily basis, Moisson Montréal is also involved in different social and/or professional integration programs. For example, thanks to a collaboration with **Centre de réadaptation en déficience intellectuelle et en troubles envahissants du développement (CRDITED)** in Montreal, an average of six adults with an intellectual disability or a pervasive developmental disorder can work alongside Moisson Montréal's employees every day. The goal: develop autonomy, break isolation and acquire assorted skills.



## PROVENANCE OF HOURS WORKED



## VOLUNTEER TRAINING PROGRAM

With the support of Emploi Québec, and as part of the program offered by PAAS-Action and **Centre de ressources éducatives et pédagogiques (CREP)** of the Commission scolaire de Montréal, Moisson Montréal welcomed 19 participants to this guidance and assistance program, which helps with social integration, skills development and job market access. Following this experience, two participants went back to school and another decided to retire.

This training program, implemented in collaboration with CREP, formally recognizes the experience and learning capacity of each participant. As such, it awarded some ten certificates of recognition for dedicated volunteer service.

In summer 2014, 12 youth joined the Moisson Montréal's team as part of the **Valorisation Jeunesse – Place à la relève program**. For the sixth consecutive year, this partnership with the City of Montreal and the Ministère de l'Immigration, de la Diversité et de l'Inclusion has enabled a group of high school graduates to find a first summer job, acquire experience and prepare themselves for future employment.



---

# BOARD OF DIRECTORS



**Richard Blain**  
President  
Full-time Lecturer  
Human Resources Management, HEC Montréal



**Pierre G. Brodeur**  
Vice President, Finance  
Partner  
Deloitte



**Pierre Dandoy**  
Vice President  
Senior Vice President, Operations  
Loblaws and Provigo Québec



**Jean-Guillaume Shooner**  
Secretary  
Partner, Lawyer  
Stikeman Elliott LLP



**Pierre Gagnon**  
Vice President  
Entrepreneur



**Dany Michaud**  
Ex-officio  
Executive Director  
Moisson Montréal

## ADMINISTRATORS



**Christine Beaulieu**  
President  
Gestion Christine Beaulieu



**Patrick Dumais**  
Vice President, Human Resources  
Aliments ULTIMA Inc.



**Christian Lamarre**  
Senior Vice President  
Financière Banque Nationale



**Eddy Jr Savoie**  
President  
Construction Groupe Savoie



**Donald Boisvert**  
Executive Director  
La Corbeille Bordeaux-Cartierville



**Johanne Brodeur**  
Legal Affairs Director  
Union des producteurs agricoles (UPA)

## AMBASSADORS CLUB

On November 26, 2014, Moisson Montréal welcomed friends and supporters to its facilities to celebrate their engagement and generosity. During the event, nine new members of the Ambassadors Club received the following honours:

*Administrator Prize:* Mr. Alain Denis, Mr. Daniel Hansen and Mrs. Sylvie Rochette

*Spokesperson Prize:* Mrs. Claudia Marques

*Champions in their Company – Donated foodstuffs Prize:* Mr. Jean-Pierre Haché, Groupe Bonduelle

*Champions in their Company – Donated goods and services Prize:* Mr. Anthony Castelli, Ciné Cast Vidéo Productions

*Champions in their Company – Volunteering Prize:* Mrs. Valérie Dubreuil, Target Canada

*Exceptional Ambassador Prize:* Mr. René Goulet and Mr. Guy Dufort, Fondation J.A. DeSève

# THE SUPPLY AND OPERATIONS

THE SUPPLY AND OPERATION TEAM CONSTANTLY STRIVES TO OPTIMIZE HOW WE RECEIVE, SORT AND DISTRIBUTE FOODSTUFFS IN ORDER TO PROVIDE A DIVERSITY AND QUALITY OF PRODUCTS. THIS PAST YEAR, THE TEAM HAD TO FACE THE HUGE DEVELOPMENTAL CHALLENGE OF IMPLEMENTING NEW PROCEDURES AND INSTALLATIONS RELATED TO, AMONG OTHER THINGS, OUR FOOD RECOVERY PROGRAM (INCLUDING MEAT) WITH SUPERMARKETS.

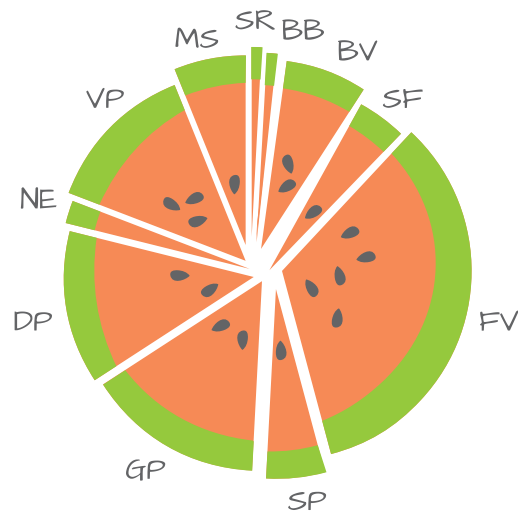
A BIG WELCOME TO OUR NEW MAJOR AGRI-FOOD SUPPLIERS, NAMELY, BOULDER BRANDS, MAPLE LEAF FOODS, C.T.S. FOOD BROKERS INC., ARDENT MILLS, BRIDOR INC. AND SAGER FOOD PRODUCTS.

## EXCEPTIONAL MOBILIZATION FOR THE HOLIDAYS

Every year, Moisson Montréal offers businesses the chance to collect food items that will contribute to our collective preparations for the Holidays. Mission accomplished, thanks to the active involvement of so many organizations!

- **Metro inc.** donated almost **\$400,000** worth of foodstuffs.
- **Fondation Sybilla Hesse** donated **\$20,000**.
- **Marcelle and Jean Coutu Foundation** donated **\$35,000** for the purchase of turkeys that our accredited organizations used to prepare **32,530** holiday dinners.

More than **245 individuals and businesses** organized food drives as part of our annual **Feed the Holiday Spirit** campaign; that's 20 more individuals and businesses than last year. They collected almost **24,000 kilos** of foodstuffs and nearly **\$33,155**, which was allocated for the purchase of foodstuffs to fill **16,000 Christmas baskets**.



**DONATED FOODSTUFFS BY CATEGORY  
FROM APRIL 1<sup>ST</sup> 2014 TO MARS 31<sup>ST</sup> 2015**

- BB** Baby food and products: less than 1%
- BV** Beverages: 5%
- DP** Dairy products: 10%
- FV** Fruits and vegetables: 37%
- GP** Grain products: 16%
- MS** Meat and substitutes: 3%
- NE** Non-edible products: 1%
- SF** Salty and fatty products: 4%
- SP** Sugared products: 2%
- SR** Sorting room products: less than 1%
- VP** Various food products: 20%

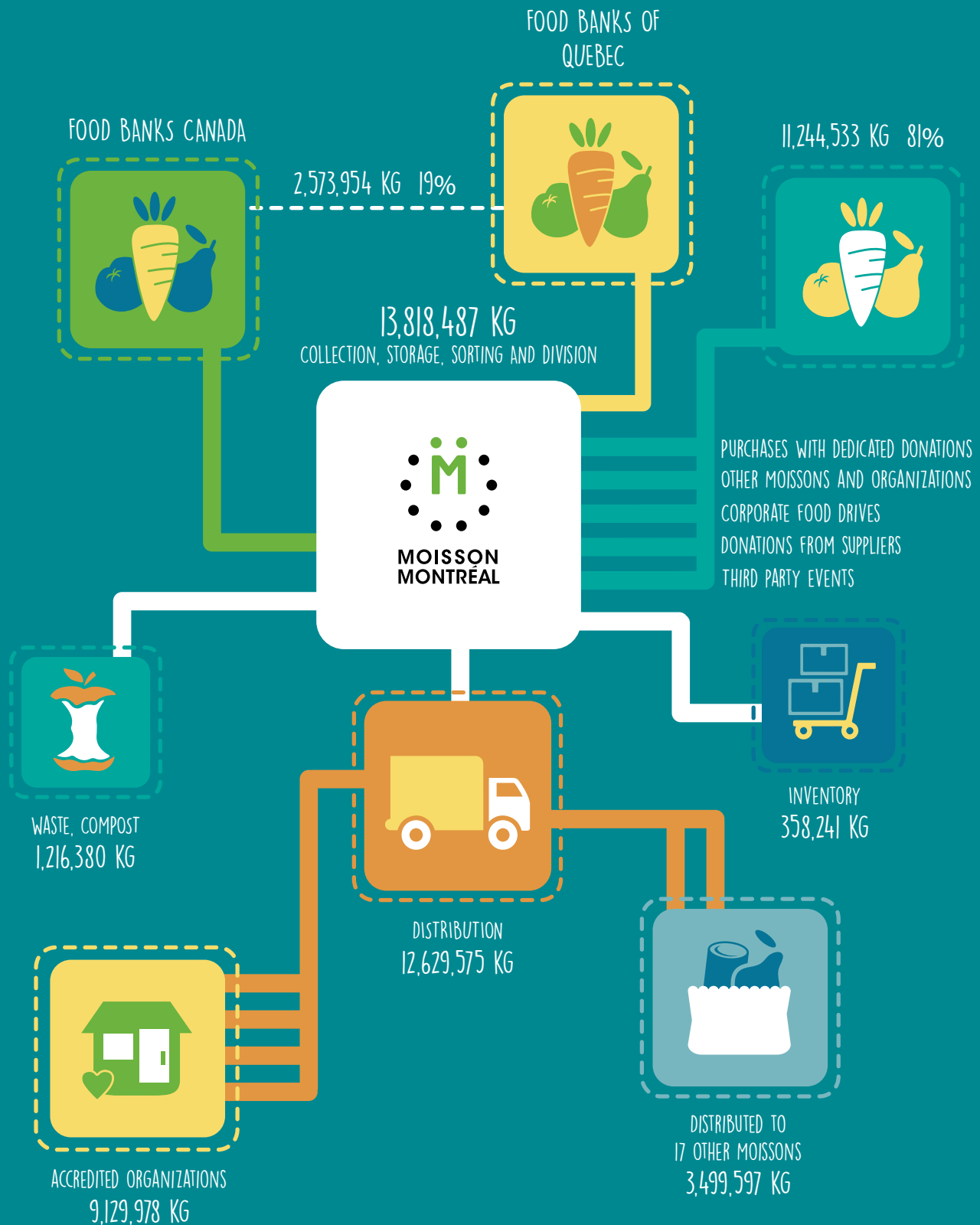
## HIGHLIGHTS

- **12,629,575 kilos** of foodstuffs distributed in 2014-2015;
- **293 agri-food suppliers** – that's 58 more than last year.



Moisson Montréal is a member of The Food Banks of Québec (FBQ) network, a group of 18 regional food banks. FBQ has entrusted Moisson Montréal with the reception and redistribution, among all Moisson members, of the foodstuffs received by the network. In line with BAQ regulations, 3,499,597 kg of foodstuffs were redistributed throughout all Moisson organizations this year.

# THE FOODSTUFF ROUTE



# COMMUNITY RELATIONS

MOISSON MONTRÉAL DISTRIBUTES ACROSS THE ISLAND OF MONTREAL, SUPPLYING 244 COMMUNITY ORGANIZATIONS ON A REGULAR BASIS AND 50 OTHER ORGANIZATIONS ON AN OCCASIONAL BASIS. ALL OF THESE ORGANIZATIONS OFFER VARIOUS SERVICES TO CITIZENS IN NEED, PROVIDING FOOD AID THAT FULFILLS THEIR SPECIFIC NEEDS.

These organizations offer the following types of food services:

- Counter, emergency groceries, food aid: **64%**
- Community meals: **47%**
- Collective kitchens: **17%**
- Community grocery stores: **8%**

## ORGANIZATIONS IN SOLIDARITY

The association between Moisson Montréal and Commerce solidaire has enabled the 57 members of the Regroupement d'achat des organismes communautaires (RAOC) network to benefit from considerable savings on food items purchased in 2014-2015. Buying volume reached \$437,821 in the last year.

## A PROACTIVE MOISSON

The community relations team works in collaboration with our accredited organizations to provide the population they serve with the services they need. This close collaboration is crucial to the proper functioning of our foodstuff distribution system. Our organizations regularly participate in surveys and other follow-up activities in order to express their satisfaction and help us get a better understanding of the status of food insecurity in Montreal.

- **71%** are satisfied with the freshness of fruit and vegetables received\*;
- **87%** are satisfied with the freshness of other foodstuffs\*;
- All accredited organizations are visited at least once a year;
- Many organizations benefit from coaching and support when implementing improvements to their facilities.

\*According to a survey conducted with 100 organizations in October 2014.

Moisson Montréal organized the 3<sup>rd</sup> edition of **Fight Against Hunger Day**, a day of conferences, workshops and discussions to help draw a clear portrait of food insecurity in Montreal.

## FEEDING OUR FUTURE

This program, offered in collaboration with Sodexo, provides food aid to 13 day camps located in at-risk neighbourhoods across Montreal. In Summer 2014, 40,435 meals were served to more than 1,035 children and a huge kids' party was also organized. Our thanks to Sodexo and spokeswoman Isabelle Huot for supporting this program, which provides a sustainable solution to the problem of food insecurity!





## MEAT RECOVERY

Meat and fish are the food items most in demand from community organizations.\* With this in mind, Moisson Montréal asked for feedback on our meat recovery pilot project with supermarkets, implemented from October 2013 to March 2014, to ascertain whether the project was functioning properly.

\*According to a survey conducted with 90 accredited organizations in June 2014 to determine their food needs.

“While we are incredibly thankful to Moisson Montréal for providing us with the wonderful quantities of meat we have received to date, we simply can’t imagine having to go back to the way it was before the project began.”

– Linda Hachey, Executive Director of Mile End Community Mission

## 59 COMMUNITY ORGANIZATIONS BENEFIT FROM OUR FOOD RECOVERY PROGRAM WITH SUPERMARKETS

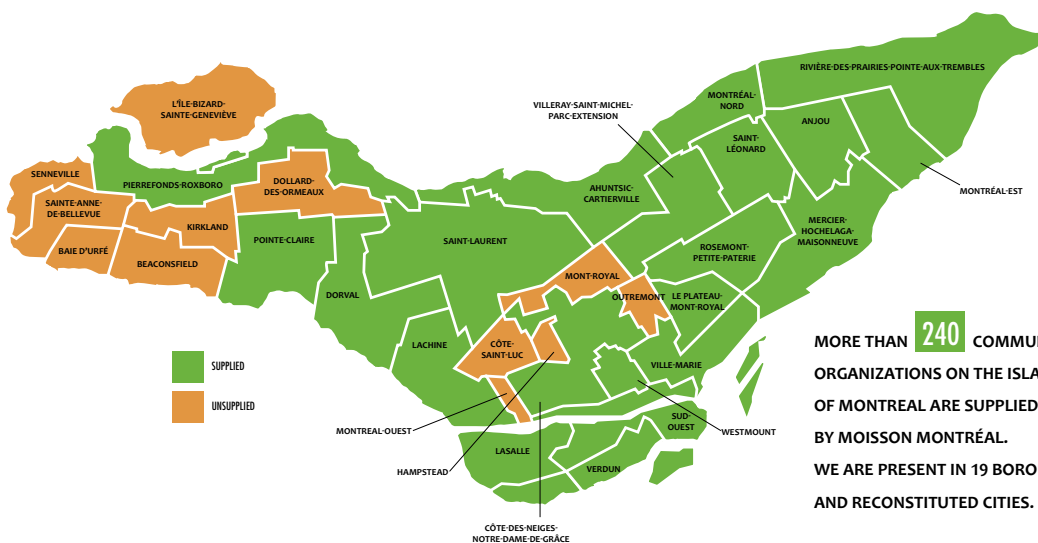
\*Some organizations are not listed following their request for anonymity.

Accueil Bonneau  
Action Centre-Ville  
Amis du Plateau Mont-Royal (Les)  
Amour en Action  
Armée du Salut  
Auberge communautaire du Sud-Ouest  
Cafétéria Multicaf  
Centre d’aide à la famille  
Centre d’entraide le Rameau d’Olivier inc.  
Centre Naha  
Chaînon (Le)  
Chic Resto-Pop  
Club garçons et filles de Lasalle

Comité social Centre-Sud  
Compagnons de Montréal  
Cuisine collective HOMA  
Cuisine et vie collective St-Roch  
Dîner St-Louis  
École Félix-Antoine  
Escale Notre-Dame  
Exode (L’)  
Extended Hands  
Fondation d’aide directe Sida  
MTL  
Fourchettes de l’espoir  
Maison à petits pas  
Maison Tangente  
Méta d’Ame

Mile End Community  
Mission Bon Accueil  
Mon Resto St-Michel  
Native friendship Center  
Nazareth House / Maison Nazareth  
Old Brewery Mission  
Omega  
Parrainage civique de la banlieue  
Ouest  
Pas de la rue  
Passages  
PEYO  
Phare de Montréal-Nord (Le)  
Refuge des jeunes de Montréal

Rencontres cuisines  
Répit-Providence  
Resto Plateau  
Sac à Dos (Le) - Action-Réinsertion  
SSVP St-Pierre-aux liens  
St-Columba Outreach  
St-James Drop In  
St-Michael’s Mission  
Toxico-Stop  
Vieux Moulin Lasalle



MORE THAN **240** COMMUNITY ORGANIZATIONS ON THE ISLAND OF MONTREAL ARE SUPPLIED BY MOISSON MONTRÉAL. WE ARE PRESENT IN 19 BOROUGHS AND RECONSTITUTED CITIES.

# PHILANTHROPIC DEVELOPMENT AND COMMUNICATIONS

THE SUCCESS OF MOISSON MONTRÉAL'S MISSION DEPENDS ON THE ENGAGEMENT OF OUR DEDICATED DONORS AND RAISING AWARENESS ABOUT FOOD INSECURITY WITH NEW MARKETS. TO KEEP PACE IN OUR EVER-EVOLVING REALITY, THE PHILANTHROPIC DEVELOPMENT AND COMMUNICATIONS TEAM MUST USE AN INCREASINGLY CREATIVE AND INNOVATIVE BUSINESS INTELLIGENCE TO KEEP MOISSON MONTRÉAL TOP OF MIND.

## SOURCES OF MONETARY DONATIONS

27,4 %	Events	9,1 %	Businesses
18,0 %	Individuals	3,2 %	Religious communities
16,7 %	Foundations	2,2 %	FBQ
12,4 %	Centraide	0,4 %	Other institutions
10,6 %	Gov. / Municipalities		

## DISTRIBUTION OF DONATIONS

90,5 %	Distribution of foodstuff donations
4,3 %	Operations and services to organizations
2,2 %	Philanthropic development and Communications
1,4 %	Good Food Box Program
1,0 %	Administration and Finance
0,5 %	Human resources and volunteer management
0,1 %	Financial expenses

Administrative charges represent less than 1,6 % of the total value of the foodstuffs we distributed in 2014-2015. 90.5% of charges are given as foodstuffs.

## CAMPAIGNS AND EVENTS

Our fundraising campaigns and events give us the visibility we need to continue providing our services every day, as well as develop future projects. This year's activities, which were made possible thanks to our generous volunteers, were responsible for raising almost 30% of our annual donations

### MAILINGS

In 2014, our precious donors responded to three mailings, collectively raising a total of \$454,675. A big thanks to everyone who continues to offer their support!

### 12<sup>TH</sup> ANNUAL GOLF CLASSIC

Moisson Montréal's Annual Golf Classic is a much anticipated and always memorable event. On May 26, 2014, more than 300 people from the business, cultural and sport milieus gathered at the Hillsdale Golf and Country Club in Mirabel to raise \$218,284 for food insecurity. These funds made it possible for Moisson Montréal to provide essential food aid to approximately 250 families of four this past year.

### 30<sup>TH</sup> ANNIVERSARY : CONSERVE EVENT

Moisson Montréal's 30 years of service inspired the Conserve event, held at the Corona Virgin Mobile Theatre on February 12, 2014. Hosted by Anne-Marie Withenshaw, the evening featured musical performances by Karim Ouellet and David Giguère, as well as culinary delights from the Grumman 78' and GURU food trucks. Works of art were also available through a silent auction, with proceeds going to Moisson Montréal. The Conserve event was a great success and allowed Moisson Montréal to reach a new generation of donors. To everyone who participated in the event, thank you for continuing to support us in the struggle to provide thousands of Montreal families with the food aid they need.

## GREAT FOOD DRIVE FOR CHILDREN

The 3<sup>rd</sup> annual Great Food Drive for Children, which took place from April 2<sup>nd</sup> to 12<sup>th</sup>, 2014, was a phenomenal success. Our goal of \$200,000 was reached and almost exceeded by \$100,000! With the support of spokeswomen Ève-Marie Lortie and Claudia Marques, and of our new official partner, Uniprix, the Great Food Drive raised \$292,285 for Moisson Montréal, Moisson Rive-Sud and Centre de bénévolat et moisson Laval. The campaign wrapped up with Children's Day, an event organized by Moisson Montréal to announce our joyous results and prepare 1,000 emergency bags for little ones 0-5 years of age. Thanks to Josée Boudreault for hosting this volunteer family activity!



## ORGANIZATIONS WHO CARES

In 2014-2015, many organizations and companies have used creativity and generosity in order to hold an event to benefit Moisson Montreal. A big thank you to contribute to our cause!

- ARRQ
- Caisses Desjardins
- Grande guignolée des médias
- La Baie
- La Ronde
- Five Hole for Food
- Les Glaceurs
- Lolë
- MMBH Tournament
- New City Gas
- Queue de castor
- Sodexo
- Canadian Pacific
- Urbania
- XN Financial

## THE GRAND EVENING BY GRAND PRIX DU CANADA

In 2014, Moisson Montréal partnered with the Grand Prix du Canada to organize The Grand Evening, a gala dinner that launches the annual Formula 1 weekend of festivities. With a portion of proceeds earmarked for Moisson Montréal, ticket sales and the silent auction generated almost \$47,000 in donations.



## MEDIA COVERAGE

In 2014-2015, Moisson Montréal's community grew exponentially on social media

**2,905** fans on Facebook, **70%** increase;

**1,360** followers on Twitter, **166%** increase;

**390** subscribers on LinkedIn, **127%** increase;

**4,035** views on Youtube.

Moisson Montréal also got excellent media coverage with more than 437 print mentions, as well as countless TV and radio interviews; most notably on Tout le monde en parle to talk about our 30<sup>th</sup> anniversary.

## CELEBRITIES PARTNER WITH MOISSON MONTRÉAL

Several Québec celebrities have associated their names to the food insecurity cause in 2014-2015. Their contribution is a key asset to increase the visibility of Moisson Montréal's mission. Thank you for lending your voice and carrying our cause!

Anne-Marie Withenshaw  
Claudia Marques  
Commandant Robert Piché  
Denis Montana  
Ève-Marie Lortie  
Isabelle Huot  
Josée Boudreault

Karim Ouellet  
La Bottine Souriante  
Marc-André Coallier  
MC Gilles  
Nathalie Lambert

# INSPIRING PROJECTS

## GOOD FOOD BOX PROGRAM

Created in Toronto in 2002 and quickly exported to other areas, the Good Food Box (GFB) program is managed regionally by Moisson Montréal.

GFB is a buying collective that obtains a large quantity of fresh produce at a fair price; which is then distributed to collectives at sustainable prices via different drop-off spots. There are three basket formats, enabling households to get the quantity they need and at a price they can afford. The GFB program is open to everyone. The more we buy together, the more we each save!

### GFB in 2014-2015

- More than 120 drop-off spots
- 50,000 boxes prepared and distributed
- More than 75,000 persons served
- 50 volunteers every week

## FOOD RECOVERY PROGRAM WITH SUPERMARKETS

In March 2014, our food recovery pilot project with supermarkets became an official program due to its successful results, great potential, the interest showed by community organizations and the successful collaboration with supermarkets. Thanks to this initiative, our accredited organizations can now provide their beneficiaries with healthier and more varied food items.

One of the great prides of Moisson Montreal in regard to this program is the supply of meat, the most needed food by our accredited organizations. Don't forget – a person who is well fed has the needed energy to seek education, turn their lives around or, in the case of our little ones, develop to their full potential.

In 2014-2015, nearly 60 collective kitchens and meals on wheels programs prepared approximately 43,500 meals every week with the addition of meat in the food they received. By offering these food items to accredited organizations, Moisson Montréal helps them save significant amounts of money that can be better spent on improving services and fulfilling their mission.

Our thanks to the 45 supermarkets that helped us distribute 293 tons of foodstuffs, including 116 tons of meat for 2014-2015!



## SUSPENDED MEALS

Thanks to a partnership with Association des restaurateurs de rue du Québec (ARRQ), the suspended meals food truck pilot project was launched in September 2014 during a Moisson Montréal benefit event, scheduled as part of the YUL-EAT festival.

The Suspended meals food truck does not sell food, but rather the opportunity to pay for meals in advance. Meal coupons are sold at the Suspended meals food truck for \$10 and then entrusted to Moisson Montréal's accredited organizations for distribution to individuals and families in need. Coupons can then be redeemed for a meal at any of Montreal's food trucks. This initiative has been realized to raise awareness about food insecurity with a new segment of those Montrealers who attend large-scale events.

Follow our food truck at [www.montreal.streetfoodquest.com](http://www.montreal.streetfoodquest.com)

**BALANCE SHEET -MARCH 31-**

	2015	2014
<b>CURRENT ASSETS</b>		
Cash	3,038,436 \$	2,836,767 \$
Accounts receivable	190,644	120,357
Grant receivable from the MAMOT	85,093	81,327
Grant receivable from the Ville de Montréal	35,600	-
Inventory of food	1,884,760	2,372,835
Prepaid expenses	73,420	104,086
Advance receivable from Good Food Box, without interest, due on June 30th, 2015	25,000	-
	<u>5,332,953</u>	<u>5,515,372</u>
Grant receivable from the MAMOT	648,846	733,939
<b>FIXED ASSETS</b>		
	6,389,272	6,673,493
<b>INTANGIBLE ASSETS</b>		
	134,232	41,309
	<u>7,172,350</u>	<u>7,448,741</u>
<b>Total assets</b>	<b>12,505,303 \$</b>	<b>12,964,113 \$</b>
<b>CURRENT LIABILITIES</b>		
Payables and accrued charges	628,172 \$	515,013 \$
Deferred contributions related to specific projects	121,739	277,205
Deferred revenue	3,380	2,030
Current portion of obligations under capital leases	47,110	87,781
Current portion of long-term debt	85,093	81,327
	<u>885,494</u>	<u>963,356</u>
<b>OBLIGATIONS UNDER A CAPITAL LEASES</b>		
	-	47,110
<b>LONG-TERM DEBT</b>		
	648,846	733,939
<b>DEFERRED CONTRIBUTIONS RELATED TO FIXED AND INTANGIBLE ASSETS</b>		
	4,007,435	3,909,718
	<u>4,656,281</u>	<u>4,690,767</u>
<b>Total liabilities</b>	<b>5,541,775 \$</b>	<b>5,654,123 \$</b>
<b>NET ASSETS</b>		
Internally restricted		
Invested in capital assets	2,468,959	2,670,193
Food processing and preservation, repacking and labeling	850,000	850,000
Exceptional future costs relating to the philanthropic development plan	-	113,571
Unrestricted	3,644,569	3,676,226
	<u>6,963,528</u>	<u>7,309,990</u>
<b>TOTAL LIABILITIES AND NET ASSETS</b>	<b>12,505,303 \$</b>	<b>12,964,113 \$</b>

**STATEMENT OF REVENUE -YEAR ENDED MARCH 31-**

	2015	2014
<b>FOOD SUPPLY</b>		
In-kind contributions of food	60,506,113 \$	74,375,475 \$
In-kind contributions of food redistributed	60,994,188	74,803,476
<b>NET RESULT – FOOD SUPPLY</b>	<b>(488,075)</b>	<b>(428,001)</b>
<b>FUND RAISING AND ADMINISTRATIVE ACTIVITIES</b>		
<b>REVENUE</b>		
Donations	2,129,453	1,921,464
Fund raising activities	2,455,117	1,321,125
Contributions	703,045	565,244
Good Food Box	782,073	691,033
Rental and interest	197,155	188,533
Amortization of deferred contributions related to fixed assets and intangible assets	265,014	288,884
	<u>6,531,857</u>	<u>4,976,283</u>
<b>EXPENSES</b>		
Operations		
Food supplies	1,354,141	1,169,302
Transportation	591,805	451,299
Maintenance of building	848,247	880,304
Community liaison	153,766	168,453
	<u>2,947,959</u>	<u>2,669,358</u>
Fund raising activities	1,238,603	259,326
Activity developments	300,838	243,433
Good Food Box	934,511	852,313
<b>MANAGEMENT</b>		
General directorate and finances	639,420	658,667
Human resources	328,913	278,881
	<u>968,333</u>	<u>916,548</u>
	<u>6,390,244</u>	<u>4,940,978</u>
<b>NET RESULT – FUND RAISING AND ADMINISTRATIVE ACTIVITIES</b>	<b>141,613</b>	<b>35,305</b>
<b>EXCESS OF EXPENSES OVER REVENUE</b>	<b>(346,462) \$</b>	<b>(392,696) \$</b>
Total revenue	67,037,970 \$	79,351,758 \$
Total expenses	67,384,432 \$	79,744,454 \$
<b>EXCESS OF EXPENSES OVER REVENUE</b>	<b>(346,462) \$</b>	<b>(392,696) \$</b>

---

## NOS ORGANISMES ACCRÉDITÉS RÉGULIERS / OUR REGULAR PARTNER ORGANIZATIONS

(excluant les organismes confidentiels / excluding confidential organizations)

### AHUNTSIC / CARTIERVILLE

Acadé-Kick / École Félix-Antoine / Le Foyer du Liban / L'œuvre des Samaritains / La Corbeille Bordeau-Cartierville / Maison des jeunes Bordeaux-Cartierville / Prise II / Rap Jeunesse (volet L'Accès-Soir) / Service de nutrition et d'action communautaire (SNAC)

### ANJOU

Centre humanitaire d'organisation de ressources et de référence d'Anjou (C.H.O.R.R.A.) / Service d'aide communautaire Anjou (SAC)

### CÔTE-DES-NEIGES-NOTRE-DAME-DE-GRÂCE

Association des étudiantes et étudiants en service social de l'UdeM / Au Pois Chic – La cuisine de NDG / Bethleem Healing Fountain / Cafétéria communautaire MultiCaf / Centre communautaire de loisirs de la Côte-des-Neiges / Centre communautaire Mountain Sights / Chai Center / Dépôt alimentaire NDG-N-D-G. Food Depot / Envol des femmes (L') - Women on the Rise / Fondations du Quartier (Les) / Garde-Manger de St-Monica (Le) / Jamaïca Association of Montreal - Association jamaïcaine de Montréal / MADA Community Center - Centre communautaire MADA / Résidence Projet Chance / Service d'interprètes, d'aide et de références aux immigrants (SIARI)

### DORVAL / L'ÎLE-DORVAL

Omega community Resources / Service éducatif spécialisé et adapté de Montréal

### LACHINE

Carrefour d'entraide de Lachine / Centre de Formation Populaire Lachine / Comité de vie de quartier Duff-Court (COVIQ) / Extended Hands / Société de Saint-Vincent-de-Paul Conférence Resurrection of Our Lord / Société de Saint-Vincent-de-Paul Conférence Saint Pierre aux liens

### LASALLE

Cadre échange de services de Lasalle / Centre Action / Centre du Vieux Moulin de LaSalle / Club Garçons et Filles de LaSalle / Destination travail du Sud-Ouest de l'île de Montréal / Maison des jeunes de LaSalle Société Saint-Vincent-de-Paul Lasalle / Triade HCT (La)

### LE PLATEAU-MONT-ROYAL

Association d'entraide Le Chaînon / Autisme et troubles envahissants du développement Montréal (ATEDM) / Centre A.S.P.A. / Centre d'aide à la famille / Centre des femmes de Montréal / Centre Le Beau Voyage inc. / Corporation Félix-Hubert d'Hérelle / Dîners Saint-Louis / Hirondelle Services d'accueil et d'intégration des immigrants (L') / Maison des Amis du Plateau Mont-Royal (La) / Maison du Parc / Mission communautaire du Mile End - Mile End Community Mission / Native Friendship Centre of Montréal (NFCM) / Resto Plateau / Sac à Dos – Action et Réinsertion sociale (Le) / Santropol roulant / Société Saint-Vincent-de-Paul, Conférence Plateau Mont-Royal / Solidarité Sawa

### LE SUD-OUEST

Arche-Montréal (L') / Armée du Salut - The Salvation Army / Atelier 850 / Au Nom de L'amour / Auberge communautaire du Sud-Ouest / Bible-Way Pentecostal Church / Centre communautaire Tyndale St Georges - Community Center Tyndale St Georges / Comité d'éducation aux adultes de la Petite-Bourgogne et de St-Henri (CÉDA) / Continuité - Famille auprès des détenues (C.F.A.D.) / Dépannage alimentaire église catholique Saint-Charles / Fondation Partageons l'Espoir - Share The Warmth Foundation / Garde-Manger pour Tous (Le) / James Lyng High School / Logifem / Maison d'entraide St-Paul - Émard / Maison des jeunes Escampette / Maison du partage d'Youville / Mission Bon Accueil - Welcome Hall Mission / Mission du Grand Berger / Scientifines (Les) / St-Anthony's Parish / St-Columba House - Outreach / St-Gabriel's Parish / Union United Church-Outreach Ministry

### MERCIER-HOCHELAGA-MAISONNEUVE

Aide alimentaire St-Victor / Association pour la défense des droits sociaux de Montréal Métropolitain (ADDS-MM) / Auberge du cœur FJTTM / Centre d'entraide le Rameau d'Olivier inc. / Centre Naha / Chic Resto-Pop / Cuisine collective Hochelaga-Maison neuve / Dopamine / GÉMO : Groupe d'entraide de Mercier-Ouest / Impact Famille / Jojo Dépannage / L'Escale Notre-Dame / La Maison Kangourou / La Maison du Pharillon / Maison à petits pas / Maison de réhabilitation L'Exode / Maison Tangente / Regroupement Entre-Mamans inc. / Répît-Providence / Service d'éducation et de sécurité alimentaire de Mercier-Est (SÉSAME)

### MONTRÉAL-NORD

Amour en action (L') / Bonsecours / Centre communautaire éducatif Philos / Centre communautaire multi-ethnique de Montréal-Nord / Centre de pédiatrie sociale de Montréal-Nord / Fourchettes de l'Espoir (Les) / Institut Pacifique / Phare de Montréal-Nord (Le) / Société St-Vincent-de-Paul, Montréal-Nord / Toxico-Stop

---

## NOS ORGANISMES ACCRÉDITÉS RÉGULIERS / OUR REGULAR PARTNER ORGANIZATIONS

(excluant les organismes confidentiels / excluding confidential organizations)

### PIERREFONDS-ROXBORO

Centre Bienvenue / Fonds d'Aide de l'Ouest de l'Île / Maison Entre Famille / Nouvelle Vision des Jeunes / On Rock Ministries

### POINTE-CLAIRE

Parrainage civique de la banlieue Ouest

### RIVIÈRE-DES-PRAIRIES-POINTE-AUX-TREMBLES

Action Secours, Vie d'Espoir / Centre d'entraide aux familles (CEAF) / Centre Bienfaisance Mont-Sinaï / Coopérative d'habitation Giron d'aile / Centre local d'initiatives communautaires du Nord-Est de Montréal (CLIC) / Cuisine collective à Toute Vapeur / Maison des jeunes Rivière-des-Prairies

### ROSEMONT-LA PETITE-PATRIE

Centre communautaire CEFEDI / Centre de Ressources et d'action communautaire de la Petite Patrie (CRAC) / Compagnons de Montréal / Comptoir alimentaire Église Évangélique de Rosemont / Église méthodiste libre de Rosemont / Maisonnée des parents (La) / Oasis des enfants de Rosemont (L') / Mission Catholique Espagnole / Projet Refuge – Maison Haidar / Service d'aide et de liaison pour immigrants - La Maisonnée

### SAINT-LAURENT

Centre communautaire Bon Courage de Place Benoît / Centre d'Encadrement pour Jeunes Filles Immigrantes (CEJFI) / Centre Soutien-Jeunesse de Saint-Laurent / Corporation culturelle latino-américaine pour l'amitié (COCLA) / Garde-Manger des Moissonneurs (Le) / Oasis de Saint-Laurent (L') / Relais Laurentien / Ressources Jeunesse de Saint-Laurent / Simonet, Réseau de soutien et de service pour mères monoparentales

### SAINT-LÉONARD

Alerte Providence / Association Haïtiano-Canado-Québécoise de promotion culturelle et artistique d'aide aux démunis / Chapelle Bonne Nouvelle - Good News Chapel / Mouvement Fraternité Multi-Ethnique / Société de Saint-Vincent-de-Paul, Conférence Saint-Léonard

### VERDUN

Centre d'aide aux familles immigrantes (Casa CAFI) / Charité Soleil Levant / Manna Verdun Food Bank / Réseau d'entraide la main qui partage / Réseau-Bénévoles de Verdun / Réseau d'entraide de Verdun / Southwest United Church and Mission / Société Saint-Vincent-de-Paul, Conférence de Verdun

### VILLE-MARIE

Accueil Bonneau / Action Centre-Ville / Association bénévole Amitié / Auberge du cœur Le Tournant / Carrefour Saint-Eusèbe / Centre d'Action Sida Montréal (Femmes) (CASM) / Centre d'entraide et de Ralliement Familial (CERF) / Comité social Centre-Sud (cantine) / Centre récréatif Poupart Inc. / Entraide Léo Théorêt / Dispensaire diététique de Montréal / Fondation d'aide directe-SIDA Montréal / Fondation du Refuge pour femmes chez Doris / Information alimentaire populaire Centre-Sud / Itinéraire (L') (Café sur la rue) / Maison Benoît Labre (La) / Loisirs St-Jacques / Maisons Adrianna / Maison Plein Cœur / Méta d'Âme / Midnight Kitchen / Mission Latino-Américaine Notre-Dame-de-la-Guadalupe / Nazareth House - Maison Nazareth / Œuvres de la Maison du Père (Les) / Old Brewery Mission / Ouvres de Saint-Jacques (L') / PAS de la rue / Passages / Ruelle de l'avenir / Projets autochtones du Québec / Projet d'intervention auprès des Mineurs-es. Prostitués-es. PIAMP / Projet LOVE / Refuge des jeunes de Montréal / Rencontres cuisines / Rézo (Santé et mieux-être des hommes gais et bisexuels) / Sida bénévoles Montréal - Aids community care Montreal (ACCM) / St-James Drop In / St-Michael's Mission / The People's Potato / Y des Femmes

### VILLERAY-SAINT-MICHEL-PARC-EXTENSION

Afrique au féminin / Carrefour populaire Saint-Michel / Centre communautaire La Patience / C.O.P.A.T.L.A. : Centre d'orientation et de prévention d'alcoolisme et de toxicomanie latino-américain / Centre Sainte-Croix / Church of Pentecost Canada Inc. / Comité Canada soins relève vie / Comptoir alimentaire Villeray / Cuisines et vie collectives Saint-Roch / Maison de Quartier Villeray (La) / Mon Resto Saint-Michel / Patro le Prevost / PEYO (L'Organisation des jeunes de Parc-Extension) / Seniors Association « FILIA » Association du troisième âge « FILIA » / Service Myriam de la Miséricorde / Services sociaux Hellénique de Québec de la communauté Hellénique du Grand Montréal

### WESTMOUNT

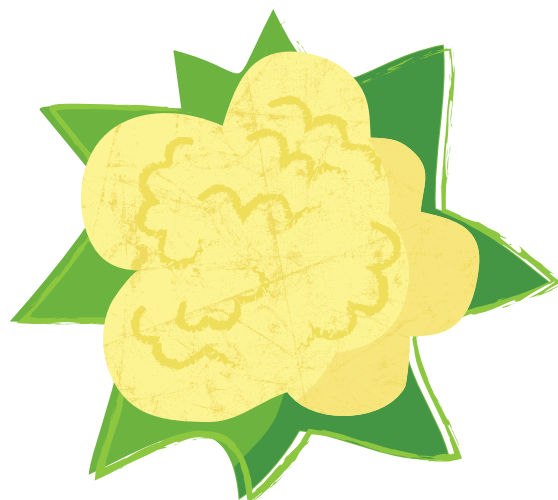
The Open Door

# NOS DONATEURS / OUR DONORS

MOISSON MONTRÉAL SOUHAITE REMERCIER LES ENTREPRISES, INSTITUTIONS ET ORGANISATIONS QUI, AU FIL DES ANNÉES, ONT DÉMONTRÉ UN ENGAGEMENT EXCEPTIONNEL ENVERS LA LUTTE CONTRE LA PRÉCARITÉ ALIMENTAIRE PAR UNE CONTRIBUTION SOUTENUE ET RÉCURRENTE EN TEMPS, EN DENRÉES OU EN ARGENT.

MOISSON MONTRÉAL WOULD LIKE TO THANK THE COMPANIES, INSTITUTIONS AND ORGANIZATIONS THAT, OVER THE YEARS, HAVE DEMONSTRATED EXCEPTIONAL DEDICATION TO THE FIGHT AGAINST FOOD INSECURITY THROUGH THEIR SUSTAINED AND RECURRING CONTRIBUTIONS, EITHER VIA FOODSTUFFS OR FINANCIAL DONATIONS.

\* Certains donateurs préfèrent garder l'anonymat. / Certain donors prefer to remain anonymous.



## DONATEURS MONÉTAIRES À VIE / LONGLIFE FINANCIAL DONORS

### PRESTIGE – 500 000 \$ +

Centraide du Grand Montréal  
Fondation J.A. DeSève  
Fondation J. Armand Bombardier  
Groupe Savoie – Les Résidences Soleil  
La grande guignolée des médias  
Ville de Montréal

### ÉMÉRITE / EMERITUS 100 000-499 999 \$

Agence de la santé et des services sociaux de Montréal  
Banque Nationale  
BELL CANADA  
Fonds de bienfaisance des employés de Montréal  
Bombardier Aéronautique  
Roxboro Excavation inc.  
The Hay Foundation inc.  
Unifor  
Walmart Canada Corp.  
West End Building and Maintenance Reg'd., 9176-1437  
Québec inc.  
Zeller Family Foundation

## DONATEURS DE DENRÉES À VIE / LONGLIFE AI FOODSTUFF DONORS

\* Denrées converties en valeur monétaire / Foodstuffs converted into monetary values

### PRESTIGE – 500 000 \$ + Aucun / None

### ÉMÉRITE / EMERITUS 100 000-499 999 \$

Aliments de consommation  
Maple Leaf  
Aliments Ouimet-Cordon Bleu  
Aliments Pasta Romana inc.  
Groupe Saint-Hubert

## ENTREPRISES BÉNÉVOLES À VIE / LONGLIFE VOLUNTEER BUSINESSES

### PRESTIGE – 2 000 H +

Bombardier inc.  
CRDITED  
Desjardins  
École secondaire Dorval Jean XXIII  
École secondaire Saint-Laurent  
KPMG

Mire (Mouvement pour l'Intégration et la Réintégration en Emploi)  
Resto Plateau  
RSM Richter S.E.N.C.R.L.  
Summit School  
Valorisation Jeunesse

### ÉMÉRITE / EMERITUS 1 000-1 999 H

Air Canada  
Carrefour Jeunesse Emploi Saint-Laurent  
Centre de formation professionnelle des métiers de la santé  
Deloitte S.E.N.C.R.L.  
École Antoine de St-Exupéry  
École Évangéline  
École secondaire Soulanges  
Herzliah High School  
Hewlett-Packard (Canada) Cie  
Intact Assurance  
Morgan Stanley  
PricewaterhouseCoopers LLP  
TELUS Québec  
UPS CANADA  
YMCA (Y des Femmes de Montréal)

## DONATEURS DE DENRÉES À VIE / LONGLIFE AI FOODSTUFF DONORS

\* Denrées converties en valeur monétaire / Foodstuffs converted into monetary values

### PRESTIGE – 500 000 \$ + Aucun / None

### ÉMÉRITE / EMERITUS 100 000-499 999 \$

Aliments de consommation  
Maple Leaf

### OR / GOLD 50 000-99 999 \$

Aliments Ouimet-Cordon Bleu  
Ardent Mills  
Produits alimentaires Sager inc.

### ARGENT / SILVER 10 000-49 999 \$

Aliments Pasta Romana inc.  
Groupe St-Hubert  
Les aliments Alasko inc.

### BRONZE 1 000-9 999 \$

A.V. 2000 inc.  
Bioforce Canada inc.



Le Groupe Jean Coutu (PJC) inc.  
Les Fermes Claude Martel  
LordFord inc.  
Orange Maison inc.  
V-TO inc. , Enviro/Chemlab  
Vera Trima International inc  
Versacold

## DONATEURS MONÉTAIRES 2014-2015 / 2014-2015 FINANCIAL DONORS

**PRESTIGE – 500 000 + \$**  
Centraide du Grand Montréal

**ÉMÉRITE / EMERITUS**  
**100 000-499 999 \$**  
Fondation J.A. DeSève  
Fondation J. Armand Bombardier  
Fondation Marcelle et Jean  
Coutu  
La grande guignolée des médias  
Ville de Montréal

**OR / GOLD**  
**50 000-99 999 \$**  
Agence de la santé et des  
services sociaux de Montréal  
Walmart Canada Corp.

**ARGENT / SILVER**  
**10 000-49 999 \$**  
Banque HSBC Canada  
Fidelity Investments Canada  
Limited  
Fondation Famille Gosselin  
Fondation James Barriere pour  
les nécessiteux  
Fondation Ronald George Simon  
Fonds de bienfaisance des  
employés de Montréal  
Bombardier Aéronautique  
Groupe LaREM  
La Ronde CAD  
Norton Rose Canada  
Piron Ward  
Régulvar inc.  
Roxboro Excavation inc.  
SYRUS  
TELUS Québec  
Transforce inc.  
Tree of Life Canada ULC - Canada  
Cares  
Uniprix inc.  
Walmart Canada Corp.  
Zeller Family Foundation

**BRONZE – 1 000-49 999 \$**  
3249531 Canada inc.  
3M Canada Company

9302-7332 Québec inc.  
Alter Ego Capital inc.  
Ardoise Design Communications  
inc.  
Armour Transportation Systems  
Astellas Pharma Canada inc.  
Banque Nationale  
BASF CANADA  
BDO Canada LLP  
BJJ Revolution Team Montréal  
Bloomberg LP  
Bonsound inc.  
Canadian Pacifique inc.  
Carl Philippe Emond chirurgien  
inc.  
Chenail Import Export  
Circonscription de Saint-Laurent  
Citrix  
Club Social Dicom  
Coalition Orage Lolo  
Collège Jean-Eudes  
Compagnie F.D.L. Ltée / Le  
Square Phillips Hôtel & Suites  
Confédération des Syndicats  
Nationaux (CSN)  
Congrégation des Petites Filles  
de Saint-François  
Congrégation des Petites Filles  
de Saint-Joseph  
Connor, Clark & Lunn  
Foundation  
Connors Transfer Limited  
Conseil Formatechno inc.  
Conseil GG inc.  
Consortia inc.  
Développement des Bassins inc.  
Docteur Louis-René Charette  
inc.  
F. Normand et S. Gibeault senc.-  
Jean Coutu  
Fédération des caisses  
Desjardins du Québec  
Fondation Boucher-Lambert  
Fondation de la Corporation des  
Concessionnaires d'Automobiles  
de Montréal  
Fondation Denise & Robert  
Gibelleau  
Fondation famille Benoît  
Fondation Léo Brossard  
Fondation Pierre R. Brosseau  
Fondation St-Germain Kavanagh  
Fondation Tirelire  
Fondation Yvon Boulanger  
Fonds de bienfaisance des  
pompiers de Montréal  
Fonds de charité des employés  
de la CUM  
Francois Chagnon MD inc.  
Fraternité monastique des  
Frères de Jérusalem - Sanctuaire  
du Saint-Sacrement  
FTQ Construction  
Genuine Health inc.  
Gestion LCYr inc.

Gouvernement du Canada  
Travaux publics et Services  
gouvernementaux Canada, Dév.  
des ressources humaines  
Gouvernement Québec  
Groupe Leclair  
Havas Worldwide Canada  
Hitachi ID Systems inc.  
JM Family Enterprises inc.  
Kraft Canada inc.  
La Banque de Toronto Dominion  
La compagnie mutuelle  
d'assurance Wawanasa  
La Coop fédérée  
La Fondation de bienfaisance  
T.A. Saint-Germain  
La Fondation Familiale Trottier  
Lafarge Canada inc.  
LCL Navigation  
Les Glaceurs  
Les Plats du Chef inc.  
Les Professionnel(le)s en Soins  
de Santé Unis (PSSU)  
Les Sœurs de Sainte-Anne du  
Québec  
Little Tiny Records  
Loblaws inc.  
Lorica Investment Counsel inc.  
Mallinckrodt Pharmaceuticals  
Manoir d'Outremont  
MedPlan Communication inc.  
Merck Canada inc.  
Ministre des Finances  
Montpak International inc.  
Morningstar Research inc.  
Osisoft Canada ULC  
PricewaterhouseCoopers LLP  
Primosolio Sales inc.  
Produits Lubri-Delta inc.  
Projexia inc.  
Promotions VPS / 2842-3861  
Québec inc.  
Protech Foundation  
Pugsley Capital inc.  
Rachel Ship Foundation  
Raymond James Canada  
Foundation  
Royal Canadian Legion BR 57  
Sanuvox Technologies inc.  
SAQ  
Secrétariat du Conseil du trésor  
SEP Technologies inc.  
Services-conseil Garceau inc.  
Sobeys Québec inc.  
Société des casinos du Québec  
Soeurs des saints noms de Jesus  
et de Marie du Québec  
Sœurs Ste-Famille-de-Bordeaux  
Stefano Faïta inc.  
Strategic Charitable Giving  
Foundation  
St-Thomas A. Becket Parish  
Tangerine Bank  
Target Canada

The Great-West Life Assurance  
Company  
The Hay Foundation inc.  
Transvac Montréal Laval inc  
TRJ Télécom inc. Unifor  
United Acoustics & Partitions  
(2003) inc.  
West End Building and  
Maintenance Reg'd., 9176-1437  
Québec inc.  
YPO Chapitre du Québec inc.,  
Young Presidents' Organization

## DONATEURS DE DENRÉES 2014-2015 / 2014-2015 FOODSTUFF DONORS (KG)

**PRESTIGE – 500 000 + KG**  
Banques alimentaires au Canada  
Bonduelle Amérique du Nord inc.  
Kraft Canada inc.

**ÉMÉRITE / EMERITUS**  
**200 000-499 999 KG**  
Agropur Coopératives  
Boulangerie St-Méthode  
Boulangerie Weston Gadoua inc.  
Chenail Import Export  
Courchesne Larose Ltée  
MADA Community Center inc.  
Metro inc.

**OR / GOLD**  
**100 000-199 999 KG**  
Aliments Ouimet-Cordon Bleu  
Bar Imex International inc.  
Botsis Fruits et Légumes  
Boulder Brands inc.  
Fruits et Légumes Gaétan Bono  
inc.  
Keurig Canada  
Loblaws inc.

**ARGENT / SILVER**  
**50 000-99 999 KG**  
Accueil Bonneau (L')  
Aliments Bercy (Les)  
Campbell Company of Canada  
Défi Jeunesse Québec inc.  
Groupe St-Hubert  
J.D. Marketing inc.  
Jardins Paul Cousineau & Fils  
inc. (Les)  
JB Laverdure inc.  
Olymel  
Plats du Chef inc. (Les)  
Produits alimentaires Sager inc.  
Saputo inc.  
Shapiro Fruits inc.  
Sobeys Québec inc.

Stericycle Canada, APS  
Versacold

### BRONZE – 1 000-49 999 KG

3651410 Canada inc. (O.A.) Regal Confections  
A. Lassonde inc.  
A.V. 2000 inc.  
Abbott Laboratories Ltd.  
Air Transat  
Alberta Food Banks  
Aliment Sélect inc.  
Aliments Conagra Canada inc. (Les)  
Aliments de consommation  
Maple Leaf  
Aliments E.D. Foods inc.  
Aliments O'Sole Mio (Les)  
Aliments Pasta Romana inc.  
Aliments Sofina Foods  
Ardent Mills  
Arthur Roger & Associés inc.  
Bioforce Canada inc.  
B-Logic  
Boulangerie Au Pain Doré inc.  
Boulangerie Première Moisson  
Boulart inc.  
Brasserie Labatt (La)  
Bruce R. Smith Transport Limitée  
C. Isabelle & fils inc.  
Canada dry Mott's inc.  
Cascades Canada inc.  
Central International Co LLC  
Commensal inc.  
Concord Premium Meats  
Consortium des marques privées  
PBC inc. (Les)  
Consumpak Groupe Vegco inc.  
Corporation d'aliments Ronzoni  
Canada  
Courtiers 9 Starz  
Crossmark Canada inc.  
CTS Foods Broker inc.  
Danone inc.  
Delfrutti  
Delta Dailyfood Canada inc.  
Delta Logistic Solutions  
Entrepôt du Nord  
Entrepôt Public  
Entrepôts Frigorifiques  
Fédération des producteurs  
d'œufs de consommation du  
Québec  
Ferme Gaston Roy & fils  
Fermes Daniel Oligny  
Fermes Russo (Les)  
Fermes Van Velzen et Fils  
Fruits Dôme inc.  
Fruits et Légumes Can-Am inc. (Les)  
General Mills Canada  
Corporation  
Groupe alimentaire Miron  
Guérin & Frères (2000) inc.  
HMS Host  
IGA Millen

IGA, Complexe Desjardins,  
Marché Louise Ménard inc.  
IGA, Îles-des-Sœurs, Marché  
Louise Ménard inc.  
IGA, Place Dupuis, Marché Louise  
Ménard inc.  
IGA, Préville, Marché Louise  
Ménard inc.  
IGA, Saint-Lambert, Marché  
Louise Ménard inc.  
Industries Touch inc. (Les)  
I-nov concept inc.  
Ippolito Montréal inc.  
Ital-Plus Imports inc.  
Jardino Marketing inc.  
Industries Touch inc. (Les)  
I-nov concept inc.  
Ippolito Montréal inc.  
Ital-Plus Imports inc.  
Jardino Marketing inc.  
La Tablee des Chefs  
Lantic inc.  
Lavo inc.  
Les Aliments Esposito Foods Ltd  
Les Aliments Levitts/Levitts  
Foods, Petit Goret (1979) inc.  
(Au)  
Les Aliments Multibar inc.  
Les Distributions Marc Boivin  
(2007) inc.  
Les Fermes Claude Martel  
Les produits Zinda Canada inc.  
Les Sœurs en Vrac  
Les spécialités Prodal (1975) inc.  
Les Viandes Lacroix  
Loblaw Delson  
LordFord inc.  
L'Oréal Canada  
Maison Sami T. A. Fruits inc. (La)  
Maxi & Cie Jean-Talon  
McCain Foods Canada  
McGill MacDonald Campus  
McMahon distributeur  
pharmaceutique inc.  
Metro Beaconsfield  
Metro Candiac  
Metro Côte-Vertu  
Metro ETS  
Metro Kirkland  
Metro Queen Mary  
Metro Somerled  
Metro St-Constant  
Metro Wilderton  
Midland Transport  
Mission Bon Accueil/Welcome  
Hall Mission  
Mondelêz International,  
Biscuiterie de Montréal  
Montenac international inc.  
Nellson Nutraceutique Canada  
inc.  
Nestlé Canada inc.  
Oasis Bags / Div of 2957-6758  
Quebec inc.  
Old Brewery Mission  
Orange Maison inc.

Parmalat Canada inc.  
Pêcheries Atlantiques du  
Québec, Division de Metro-  
Richelieu inc.  
Potager Mont-Rouge (Le)  
Prince Logistics Services inc.  
Produits Phoenicia inc.  
Produits Plaisirs Glacés inc.  
Produits Yousra inc. (Les)  
Provigo Ste-Julie  
Rapid Snack inc.  
Satau inc.  
Schonfeld Transport  
Second Harvest  
Services de distribution IKEA  
CA, inc.  
Société du Groupe  
d'embouteillage Pepsi  
Super C Atwater  
Super C St-Jacques  
Target  
Transport Logi-Pro inc.  
Transport Robert (1973) Itée  
Tree of Life Canada ULC - Canada  
Cares  
Union Fruits inc.  
Van Houtte inc., Siège social  
Veg Pro international inc.  
Ventes Fermes Cavendish Itée  
(Les)  
Ventes Rudolph 2000 inc.  
Vera Trima International inc.  
Vitran Express Canada inc.  
Walmart #3046  
Walmart #3094  
Walmart Canada Corp.  
Western Harvest inc.  
Wong Wing Foods inc.

ESG UQAM  
evenko  
Fibrenoire inc.  
Fourgons Leclair inc.  
Fournitures de bureau Denis inc.  
GE Capital  
Groupe de course Octane inc.  
Groupe Savoie – Les Résidences  
Soleil  
H&R Block  
Industries Goodwill Renaissance  
Montréal inc.  
Industries Touch inc. (Les)  
Interfacing Technologies  
Kamicase  
La Corbeille-Bordeaux-  
Cartierville  
La Mary Poppins Animation inc.  
La Ronde  
La Tête Chercheuse inc.  
Lavo inc.  
Les Contenants Jos. Le Bel inc.  
Les Eaux Naya  
Les éditions du passage  
Les fondations du quartier  
LINKBYNET  
Location d'outils Simplex  
Location Empress inc.  
Louise Benoit Communications  
inc. (Salon Maternité Paternité  
Enfants)  
MADA Community Center inc.  
Michaels  
Norampac  
Nordic Réfrigération  
Oasis Bags / Div of 2957-6758  
Quebec inc.  
Outdoor Media Works  
OVH Hébergement inc.  
Paquette & Associés, s.e.n.c.r.l.,  
Huissiers de justice  
pH santé beauté inc.  
Pierre-Fabre Dermo-Cosmétique  
Piron Ward  
Postes Canada  
Productions 3.2.1. cirque  
Produits Plaisirs Glacés inc.  
Revue L'Alimentation  
Ricardo Media inc.  
Rona Centre de rénovation  
SAFEC  
Saint-Louis électrique inc.  
Services de distribution IKEA  
CA, inc.  
Société des casinos du Québec  
Soverdi  
Stantec  
Stikeman Elliott S.E.N.C.R.L.,  
s.r.l.  
SYRUS  
Toitures Omer Brault inc.  
Transport Robert (1973) Itée  
Trophée Victoire enr.  
Vortex Solution inc.  
V-TO inc.

## FOURNISSEURS DE BIENS ET SERVICES 2014-2015 / 2014-2015 GOODS & SERVICES SUPPLIERS

Accent Impression inc.  
Agence de Maquillage Thaly  
Amusements Boréal inc.  
Association des restaurateurs de  
rue du Québec  
Avenue 8  
Banque Nationale du Canada  
Bell Nordic inc.  
BMR Matco-Ravary  
BrandAlliance  
Brasserie Labatt du Canada  
Casino de Montréal  
Corpo Média inc.  
Déménagement La Capitale inc.  
DidierKPhoto  
Dominos Pizza Pointe-Claire  
Duropac  
Éclipse Conseil inc.  
École nationale de l'humour  
Espace pour la Vie

West End Building and Maintenance Reg'd. 9176-1437 Québec inc.

## ENTREPRISES BÉNÉVOLES 2014-2015 / 2014-2015 VOLUNTERRING ENTERPRISES

4e Unité de contrôle des  
Mouvements des Forces  
Canadiennes  
AAF Canada  
Abbott Laboratories Limited  
Académie de Roberval  
Action Centre-Ville  
Action Secours, Vie d'Espoir  
Aéroports de Montréal  
Afrique au féminin  
AGEEPUM  
Agility Logistics  
Amour en action (L')  
Aon Risk Solutions  
Arcelor Mittal  
Ardent Mills  
Association Haïtiano-Canado-  
Québécoise de promotion  
culturelle et artistique d'aide aux  
démunis  
Astellas Pharma Canada inc.  
Auberge communautaire du  
Sud-Ouest  
Banana Republic - GAP  
Banque HSBC Canada  
Banque Nationale  
Banque Scotia, centre  
de financement aux  
concessionnaires  
BDC (Banque de développement  
du Canada)  
BELL CANADA  
Bible Way Pentecostal Church  
BMO Groupe financier  
BNP Paribas  
BonSecours inc.  
Bonsound inc.  
Bristol-Myers Squibb Canada inc.  
C.A.D.R.E. - Échange de services  
de LaSalle  
Caroline Néron  
Carrefour d'Entraide de Lachine  
Carrefour Jeunesse Emploi  
Plateau Mont-Royal  
Carrefour populaire de Saint-  
Michel  
Cat Lovers Rescue Group  
CCÉDA - Comité d'éducation aux  
adultes de la Petite-Bourgogne  
et de St-Henri  
Celsius communications inc.  
Centre Bienvenue inc.  
Centre Champlain  
Celsius communications inc.

Centre communautaire Bon  
Courage de Place Benoît  
Centre communautaire La  
Patience  
Centre de Ressources et d'action  
communautaire de la Petite  
Patrie (Le) (CRAC)  
Centre d'entraide et de  
ralliement familial (CERF)  
Centre des femmes de Montréal  
Centre du Vieux Moulin de  
Lasalle  
Centre François-Michelle  
Centre Soutien Jeunesse de  
Saint-Laurent  
Charles River Laboratories  
Chrysler Canada  
Cisco  
Citi Financière  
Citrix  
Club Garçons et Filles de Lasallé  
Collège Charles-Lemoyne  
Collège de Montréal  
Collège Jean-De-Brébeuf  
Compagnie 3M Canada  
Compagnons de Montréal  
Compugen inc.  
Continuité-Famille auprès des  
détenues (CFAD)  
Corbeille-Bordeaux-Cartierville  
(La)  
Corporation Baxter  
Crédit VW Canada inc.  
Volkswagen  
Croix Bleue Medavie  
Cuisine collective à Toute Vapeur  
Cuisines et vie collectives Saint-  
Roch  
Datascan Field Services ULC  
Montreal  
Destination Travail du Sud-Ouest  
de l'île de Montréal  
École Amos  
École des sciences de la gestion  
ESG-UQAM  
École Georges-Vanier  
École secondaire Calixa-Lavallée  
École secondaire Henri-Bourassa  
École Secondaire Jean-Grou  
École secondaire St-Laurent,  
Pavillon Cardinal  
Edelman Relations Publiques  
EMC Corporation  
Emmanuel Christian School  
English Montreal School Board-  
Vincent Massey School  
Entraide Léo Théorêt  
Essilor Canada Itée.  
Étudiants à votre service  
Fibrenoire inc.  
Fido solutions inc.  
First Book Canada  
FM Global  
Fondation Autisme Montréal  
Fonds d'aide de l'Ouest-de-l'île

General Electric Lighting  
Solutions  
Gestion de Placements Innocap  
inc.  
Great-West (La)  
Groupe de course Octane inc.  
Groupe Dynamite inc.  
Hirondelle Services d'accueil et  
d'intégration des immigrants  
(L')  
Hôtels Marriott du Canada (Les)  
IHS  
Implique action  
Information alimentaire  
populaire Centre-Sud  
Jeunesse Loyola  
Karelab, 230  
Keurig Canada  
Kraft Canada inc.  
Kronos  
La Ronde  
Laboratoires Abbott Limitée  
Lafarge  
Les Distributions l'Escalier  
Limited Brands Canada - La  
Senza  
Links High School  
Loblaws Inc.  
Loisirs St-Jacques de Montréal  
L'Organisation des jeunes de  
Parc Extension (P.E.Y.O.)  
Love In Action (Good News  
Church)  
Maison d'entraide St-Paul &  
Émard  
Maison des jeunes Bordeaux-  
Cartierville  
Maison du Pharillon (La)  
Maison grise de Montréal (La)  
Maison Tangente  
Maxxam Analytics  
McGill MBA Games 2014  
McGill University - Toastmasters  
Club  
McMaster University  
Méta d'Âme  
Mission du Grand Berger  
Montréal Groupe Fusion  
Mouvement Fraternité Multi-  
Ethnique  
NEI Investments  
Novartis Pharma Canada inc.  
NTD Apparel inc.  
OCRCVM - IIROC  
Omron Canada inc.  
Opération Placement Jeunesse  
Orange Business Services  
Osisoft Canada ULC  
Otera Capital  
Pas de la rue  
Patty Shapiro & Associates  
Pfizer Canada inc.  
Pharmascience inc.  
Polyvalente des Quatre-vents  
Quintiles Canada inc.

Refuge en Action  
Rencontres cuisines  
Ressources Jeunesse de Saint-  
Laurent  
Rézo (Santé et mieux-être des  
hommes gais et bisexuels)  
RGA Compagnie de réassurance-  
vie du Canada  
Ricoh Canada inc.  
Roche Diagnostics  
Rolls-Royce Canada  
Ruelle de l'avenir Sac à Dos (Le)  
Action - Réinsertion sociale  
Salesforce.com  
SAS CANADA INC.  
Scientifines (Les)  
Service d'aide communautaire  
Anjou (SAC Anjou)  
Service d'aide et de liaison pour  
immigrants/La Maisonnée  
Service de nutrition et d'action  
communautaire (SNAC)  
Services Pro-Staging inc.  
Shire Canada inc.  
SIARI Service d'interprète, d'aide  
et de références aux immigrants  
Simonet, réseau de soutien  
et de service pour les mères  
monoparentales  
Société St-Vincent-de-Paul  
conférence St-Pierre-aux-liens  
Softchoice  
Standard Life du Canada  
Stantec Consulting Ltd  
Starbucks Canada  
Talsom  
Target  
TD Assurance  
Télio et Cie  
The Sacred Heart School of  
Montreal  
Transat Découvertes  
Tree of Life Canada ULC - Canada  
Cares  
UAP inc.  
Univar Canada  
Université de Montréal - Faculté  
de droit  
Vidéotron  
West Island College - Collège de  
l'ouest de l'île  
Westcoast Connection  
Westmount High School  
(G.R.A.V.Y.)  
Xerox Canada Ltée.  
Yarmouth Colt's Boys Soccer  
Club

Moisson Montréal remercie Centraide, fidèle  
partenaire, pour son appui indispensable.

Moisson Montréal wishes to thank Centraide,  
a loyal partner, for its crucial support.



**Centraide**  
du Grand Montréal